

NASOperations
ATOSysOps



PHX RWY 8/26 Closure

Date:
07/12/2016

Presented to:

Presented by:

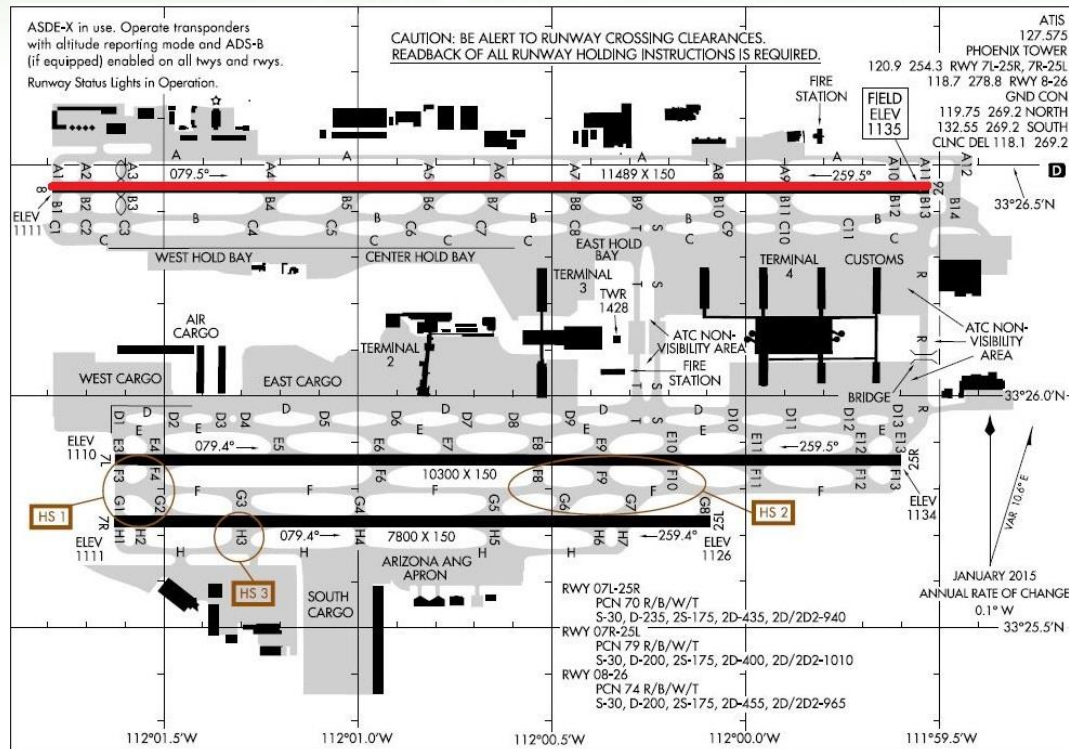
Tom Morgan, Deputy Director,
System Operations, West-South



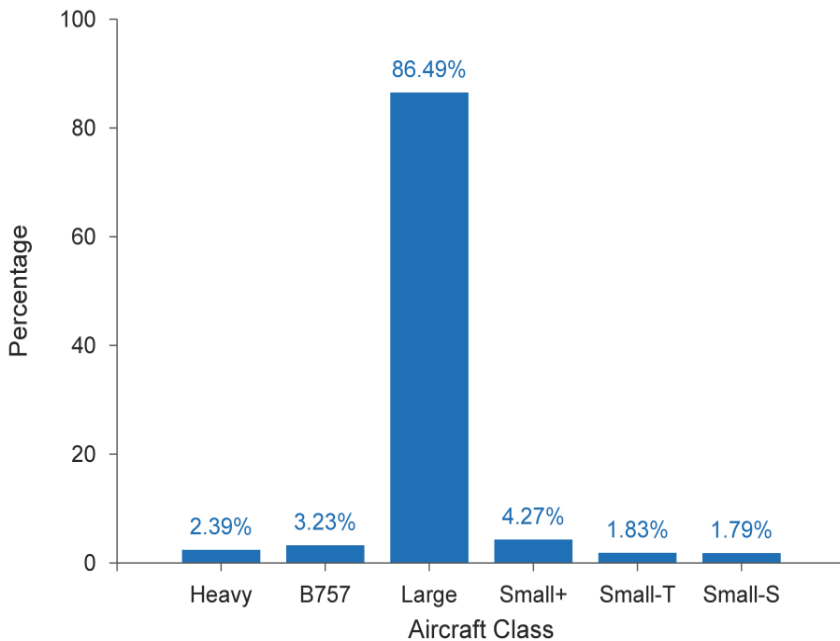
FAA
Air Traffic Organization

PHX Runway 8/26 Closure

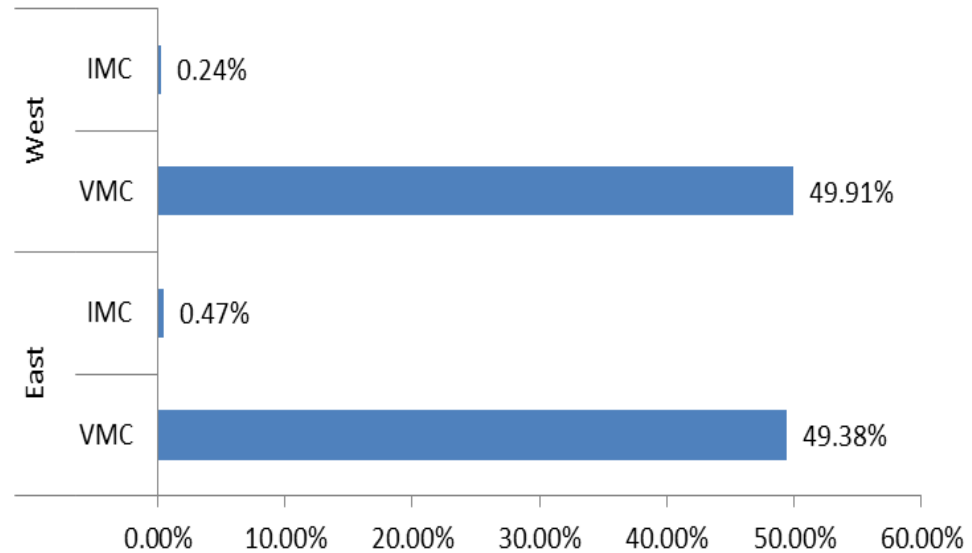
- Scheduled to begin October 2016 for 30 days
- Single arrival runway
- Single departure runway
- Centerline distance between open runways approximately 800'
- Modeling was done using the most balanced VMC rates, which will be 40 AAR/ADR



PHX Fleet Mix & Configurations

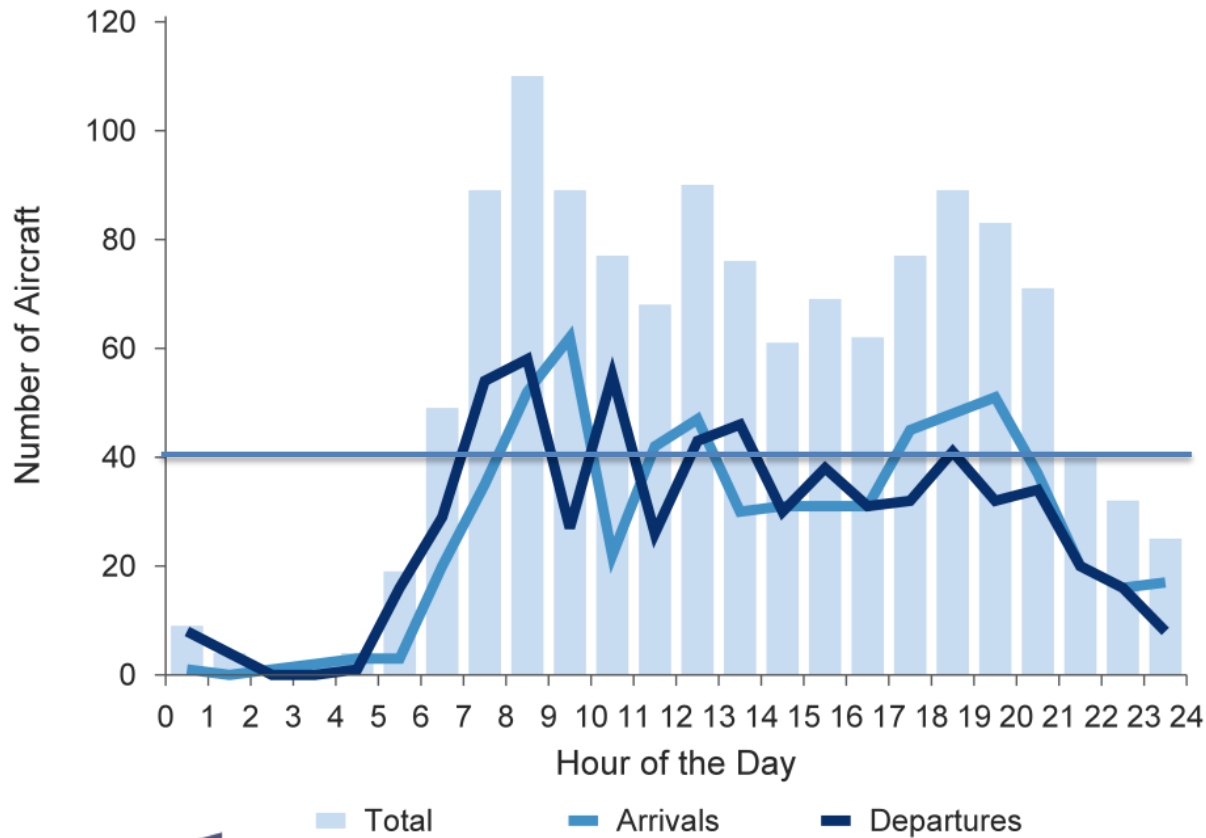


Configuration Frequency

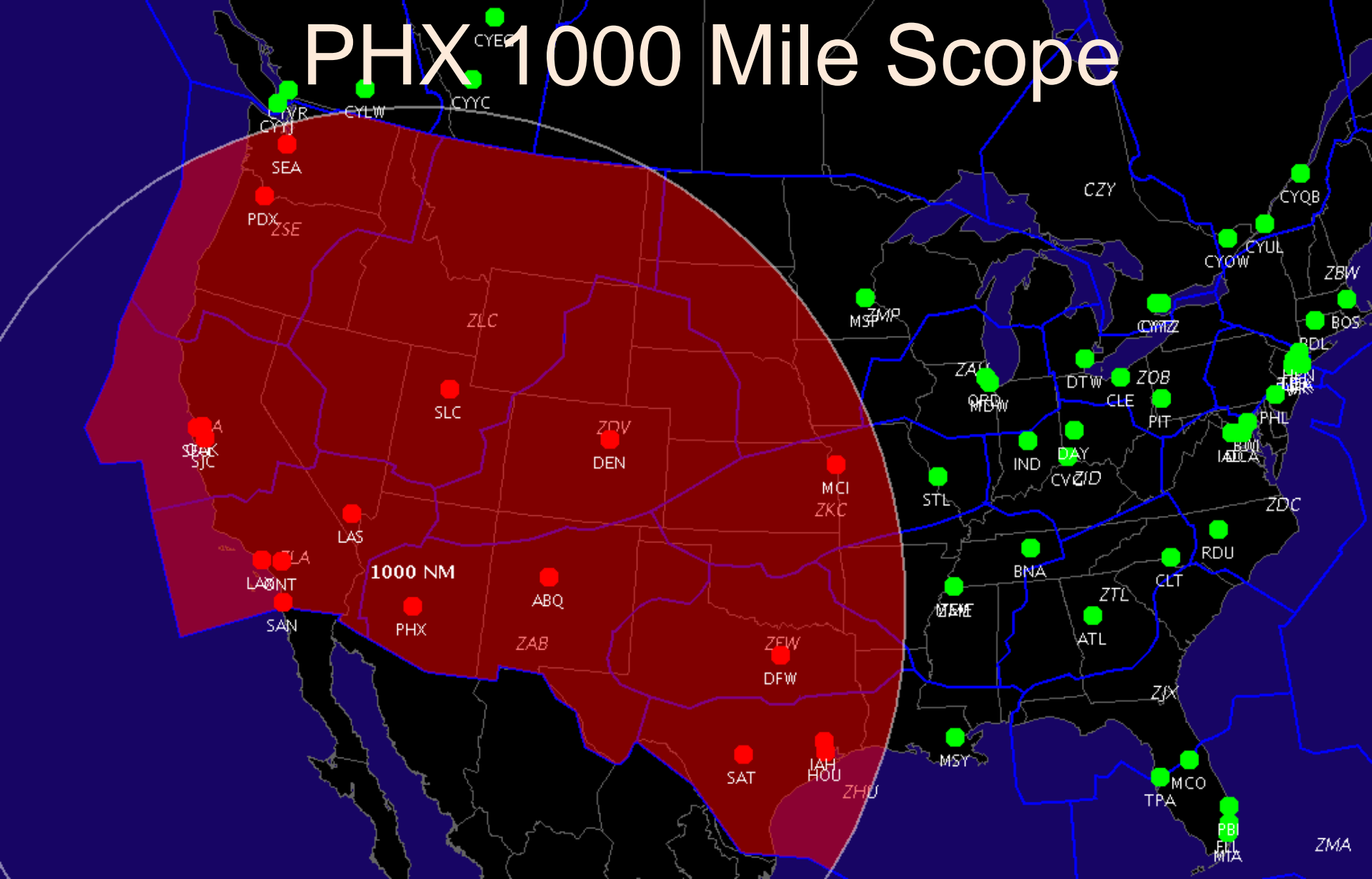


PHX Typical Traffic Day

- 1200-1300 operations per day during October



PHX 1000 Mile Scope



PHX GDP Projections

- GDPs were modeled at an AAR40 using peak arrival demand periods from the busiest weekday data for last October. Traffic is up just under 1.5% FYTD.
 - 1430Z-1700Z (Anticipated weekday period)
 - 90-100 flights affected
 - Average delay 19 minutes, 1800 total minutes
 - 0000Z-0300Z (Anticipated weekday period)
 - 80-90 flights affected
 - Average delay 33 minutes, 2600 total minutes
 - More compact period with less recovery room equals higher average delay