

Orlando International Air Traffic Control Tower (MCO)

Customer Briefing on the
Runway 17R/35L and
associated Taxiway closures

Presented to: Orlando International Customer Group

By: Orlando International Construction / Surface Work Group

Date: September 21, 2015



Federal Aviation
Administration



Runway Construction/Closures

- **Beginning at the end of October 2015**
 - Orlando International (MCO) Runway 17R/35L is scheduled to be closed beginning in October 2015 for approximately 60 \pm days
- **Estimated January 2016**
 - MCO Runway 18L/36R is scheduled to be closed at the completion of the 17R/35L closure for approximately 60 \pm days
 - Note: An operational Impact briefing will be completed by the end of October for this closure.

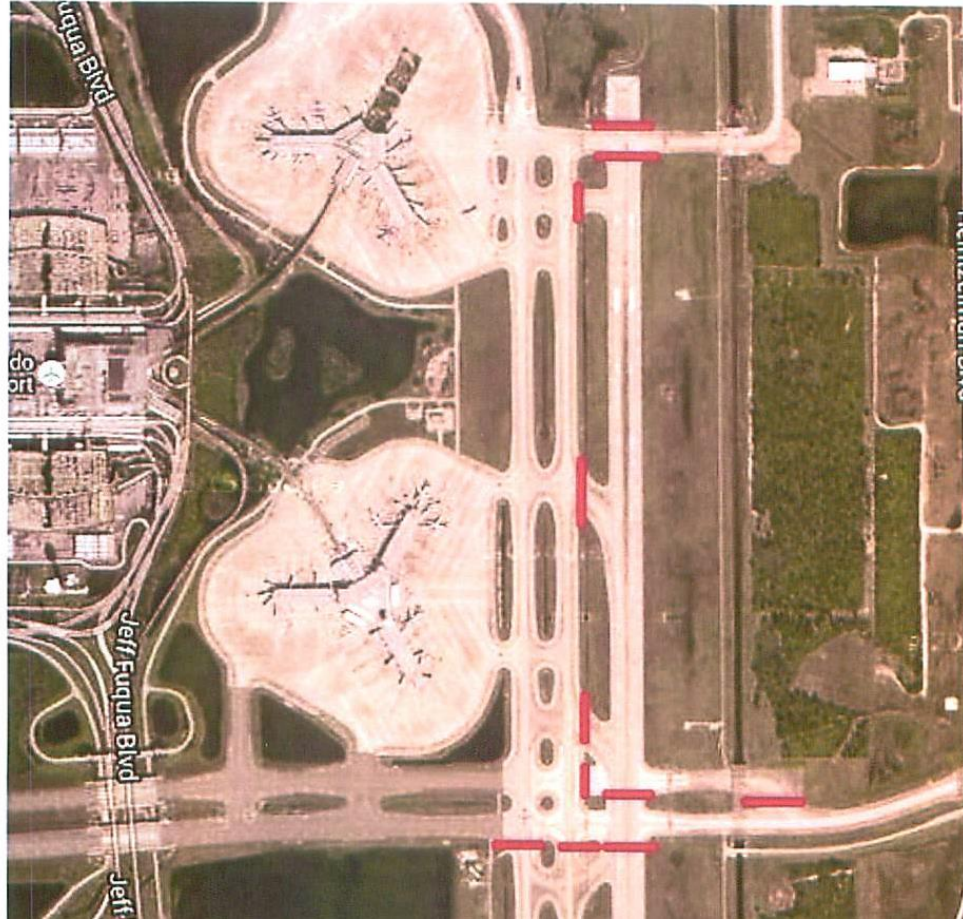


Phase 1: MCO Runway/Taxiway Construction/Closures

- **50 ± DAYS**
 - Taxiway G and H south of F
 - Taxiway E east of 17R including E-6



Phase 1 closure



Federal Aviation
Administration

Operational Expectations: Phase 1

- **South Operation**

- Arrival runways 18R and 17L
- Departure runway 18L
- Arrival Rate (AAR)
 - VMC 64
 - IMC 52
- Departure Rate (DPR)
 - 52 VMC/IMC

- **Preferred departure taxi routes**

- Airside 2 and H-3/H-4 exits: G and J
- Airside 4 at E-4/E-5 exits: F and C



Operational Expectations: Phase 1

- **South Operation – West Complex (Rwy18L/R) Arrivals**
 - Aircraft landing on the west complex destined to Airside 2 and 4 plan to utilize taxiways E and G.
 - Taxiway J will be used primarily as a westbound route



Operational Expectations: Phase 1

- **North Operation**

- Arrival runways 36L and 35R
- Departure runway 36R
- Arrival Rate (AAR)
 - VMC 64
 - IMC 52
- Departure Rate (DPR)
 - 52 VMC/IMC

- **Preferred departure taxi routes**

- Airside 2 via taxiway G and F
- Taxiway J will be used primarily eastbound taxi route



Operational Expectations: Phase 1

- **North Operation West Complex (Runway 36L/R)**
 - Aircraft landing on the west complex destined to Airside 2 and 4 plan to utilize taxiways E and G.
 - Taxiway J will be primarily an eastbound
- **Runway 35 R Arrival**
 - Aircraft parking at airside 1 expect taxiway N and F
 - Taxiway J will be primarily an eastbound route

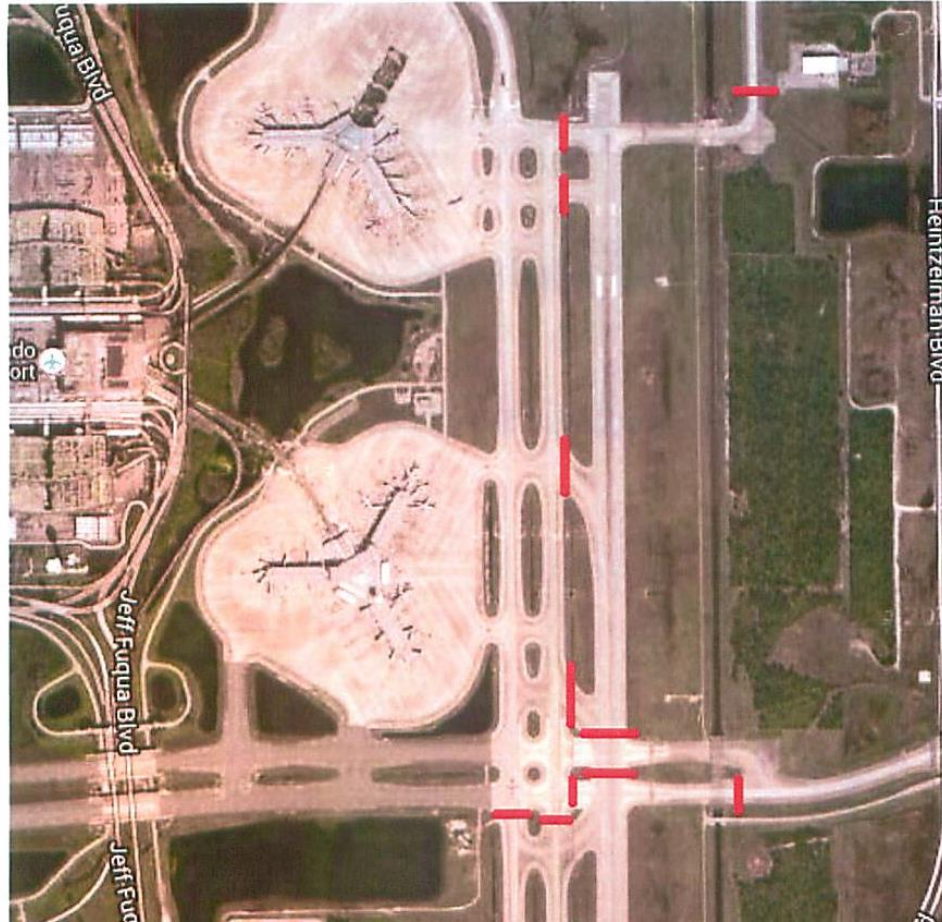


Phase 2 MCO Runway/Taxiway Construction/Closures

- **± 10 Days**
- **Taxiway closures:**
 - Taxiway G and H south of Taxiway F
 - Taxiway K
 - Taxiway F between taxiway E-6 and H
- **Taxiway J and Taxiway L closed**
 - **One (1) hour** prior permission for JetBlue and Silver airways maintenance only



Phase 2



Federal Aviation
Administration

Operational Expectations: Phase 2

- **South Operation**
 - Arrival runways 18R and 17L
 - Departure runway 18L
 - Arrival Rate (AAR)
 - VMC 64
 - IMC 52
 - Departure Rate (DPR)
 - 52 VMC/IMC



Operational Expectations: Phase 2

- **North Operation**

- Arrival runways 36L / 35R arrivals

- Runway 35R arrivals expect taxiway Route – Taxiway N and F
 - Taxiway J closed and will be barricaded



Operational Impact – Runway 17R/35L Closure

- **Expect delays and increased taxi times during the closure.**
- **Some departure and arrival taxi routes will be non-standard.**
- **There will be limited taxi alternatives, limited movement areas, limited staging capability during closures**



Contact Information

Debbie Kies, Air Traffic Manager

(407) 852-7599

Email: Debbie.Kies@faa.gov

Don Romberg, Operations Manager

(407) 852-7524

Email: Donald.J.Romberg@faa.gov

Darryl Ladnier, Staff Support Specialist

(407) 852-7514

Email: Darryl.Ladnier@faa.gov



**Federal Aviation
Administration**