

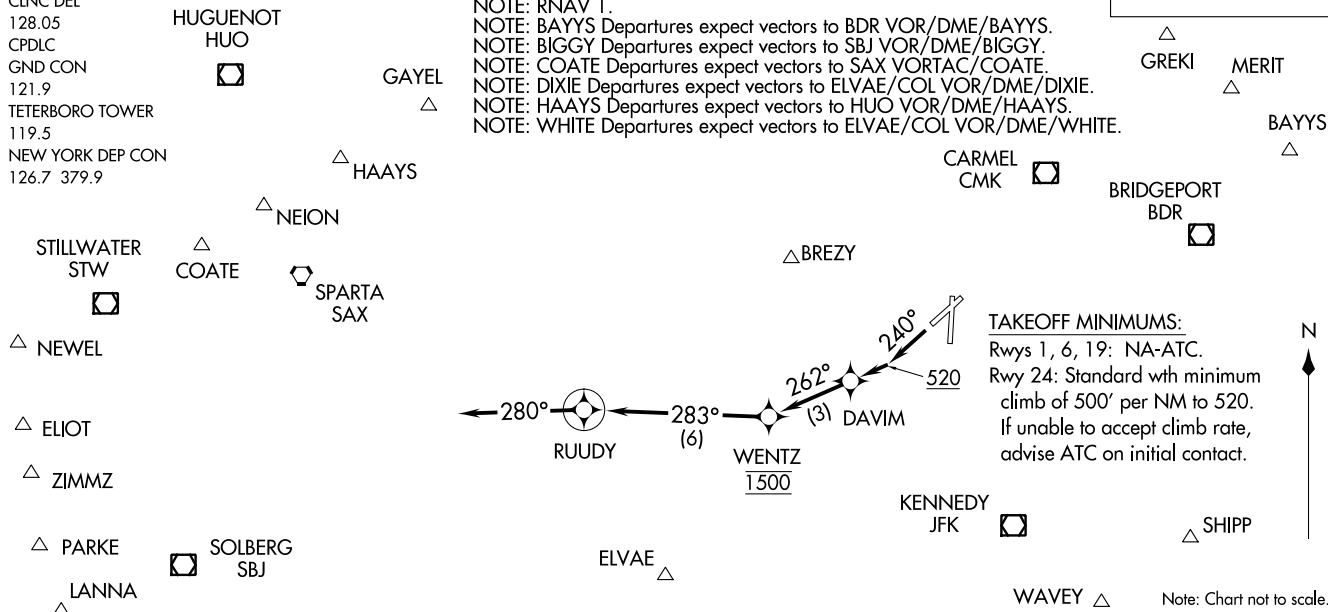
RUUDY SIX DEPARTURE (RNAV)
 (RUUDY6.RUUDY) 17AUG17

RUUDY SIX DEPARTURE (RNAV)
 (RUUDY6.RUUDY) 17Z29

D-ATIS
 114.2 132.85
 CLNC DEL
 128.05
 CPDLC
 GND CON
 121.9
 TETERBORO TOWER
 119.5
 NEW YORK DEP CON
 126.7 379.9

NOTE: DME/DME/IRU or GPS required.
 NOTE: RADAR required.
 NOTE: RNAV 1.
 NOTE: BAYYS Departures expect vectors to BDR VOR/DME/BAYYS.
 NOTE: BIGGY Departures expect vectors to SBJ VOR/DME/BIGGY.
 NOTE: COATE Departures expect vectors to SAX VORTAC/COATE.
 NOTE: DIXIE Departures expect vectors to ELVAE/COL VOR/DME/DIXIE.
 NOTE: HAAYS Departures expect vectors to HUO VOR/DME/HAAYS.
 NOTE: WHITE Departures expect vectors to ELVAE/COL VOR/DME/WHITE.

**TOP ALTITUDE:
2000**



TAKEOFF MINIMUMS:
 Rwy 1, 6, 19: NA-ATC.
 Rwy 24: Standard wth minimum climb of 500' per NM to 520.
 If unable to accept climb rate, advise ATC on initial contact.

TAKEOFF OBSTACLE NOTES:

Rwy 24: Structures and trees beginning 26' from DER, 214' left of centerline, up to 67' AGL/76' MSL. Pole and trees beginning 249' from DER, 100' right of centerline, up to 54' AGL/103' MSL. Buildings, poles, sign, and trees beginning 2724' from DER, 536' right of centerline, up to 83' AGL/272' MSL. Trees beginning 5264' from DER, 1915' right of centerline, up to 100' AGL/309' MSL. Trees beginning 1.3 NM from DER, 1744' right of centerline, up to 88' AGL/217' MSL.

DEPARTURE ROUTE DESCRIPTION

TAKEOFF RWY 24: Climb heading 240° to 520, then direct DAVIM, then on track 262° to cross WENTZ at 1500, then on track 283° to RUUDY, then on heading 280° or as assigned by ATC, thence

. . . . expect vectors to assigned route/fix. Maintain 2000; expect clearance to filed altitude ten minutes after departure.

Note: Chart not to scale.

TETERBORO, NEW JERSEY
 TETERBORO (TEB)

TETERBORO, NEW JERSEY
 TETERBORO (TEB)