

Data Communications Program

Update Briefing for the Monthly Flight Plan Filers' Telcon

Presented by: Data Comm Program Office

Date: March 2, 2016



**Federal Aviation
Administration**



Data Comm Status

- **S1P1**

- Implements Initial Departure Clearance (DCL) Tower Service
- In the middle of national rollout
 - 9 sites operational,
 - 5 more scheduled this month
 - Pace continues 'til Nov '16 with 56 PDC & CPDLC sites, 17 PDC Only sites

- **S1P2 Planned (Challenge) Schedule**

- 2017 – Change from individual TDLS logon to KUSA
- 2018 – Initial en route services key sites
- 2019 – Initial en route services national rollout



Important Changes for Filers

1. **Need to file an ICAO FP, because the following ICAO fields are needed for CPDLC**
 - a) 10b – Data Comm Equipage
 - b) 18 REG/ - Aircraft Registration
 - c) 18 DAT/ - priority of using CPDLC vs. PDC—i.e., “1FANS2PDC

2. **Accuracy of the aircraft registration in the FP has become critical**



For those filers that work with pilots...

- **Getting the logon correct is very important**
 - Call sign
 - A/C registration
 - ICAO Airport Identifier (e.g., KIAD)
- **Especially important after power down with session.**
- **Working to make system more forgiving, but will still be important**

If pilot makes logon error...

- **Ensure the following are correct and reattempt logon**
 - ICAO Airport Identifier (e.g., KSFO)
 - Call sign
 - Registration



Origins of Non-Loadable Routes

Non-loadable routes may originate with...

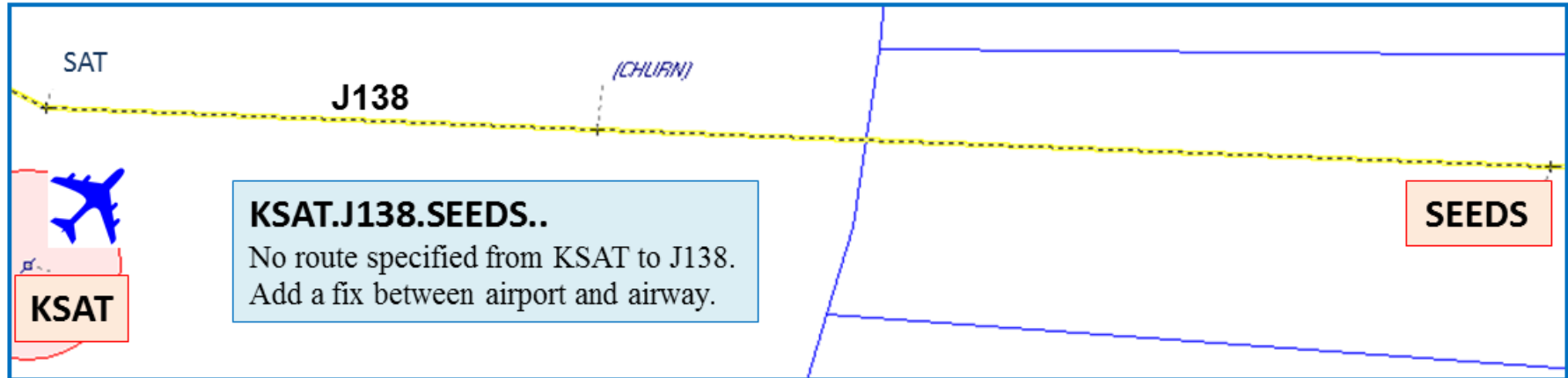
- **A route filed in the FPL, or a subsequent CHG message,**
- **An adapted ADR, ADAR, or CDR, adapted in ERAM**
- **A controller entered manual route**
- **Use of a non-ICAO airport identifier.**

Since 2014 FAA has corrected, or mitigated more than 90% of non-loadable ADRs, ADARs and CDRs affecting CPDLC departures airports.

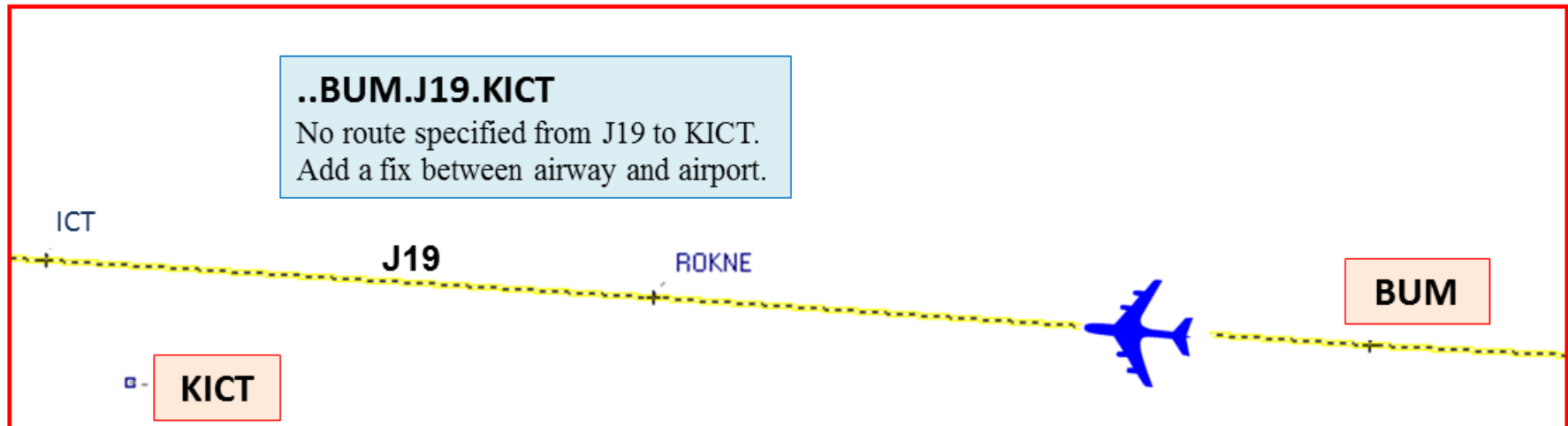
- **Approximately 4,500 changes thus far**

No Route Between Airport and Airway

Airway 1st- Airway as the first route element



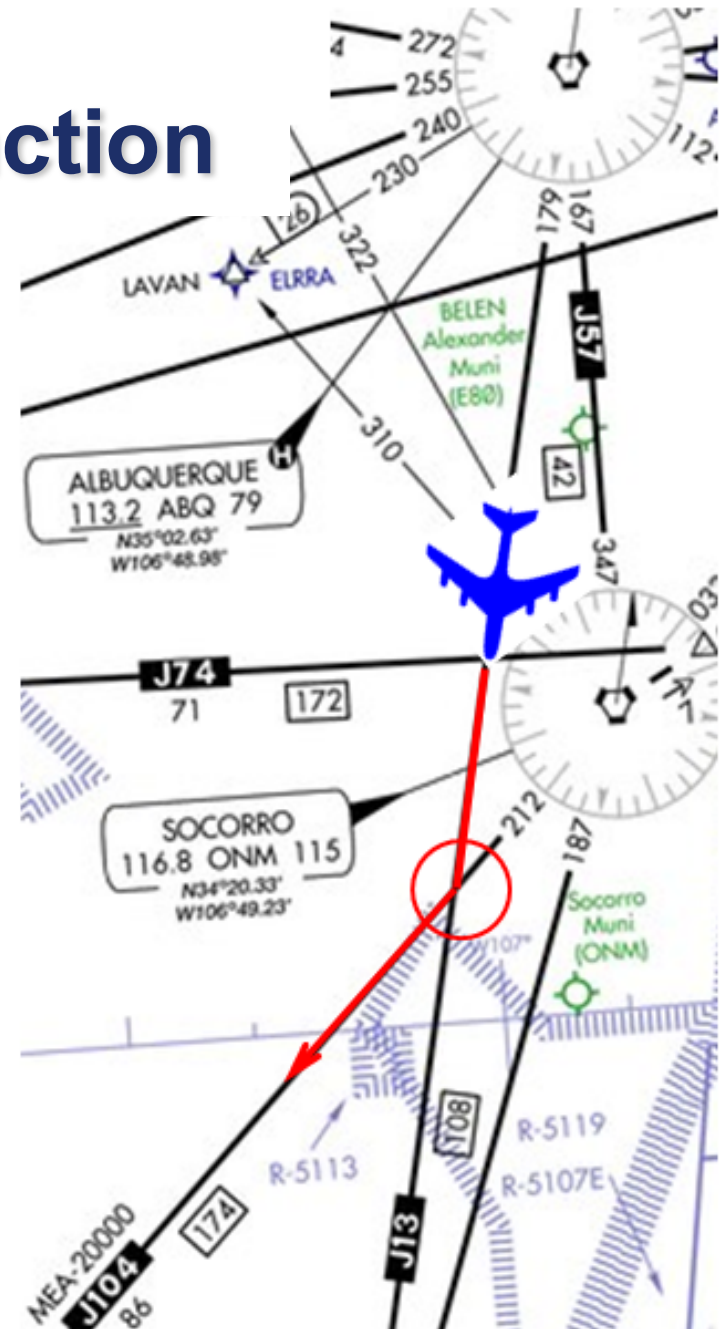
Airway Last- Airway as the last route element



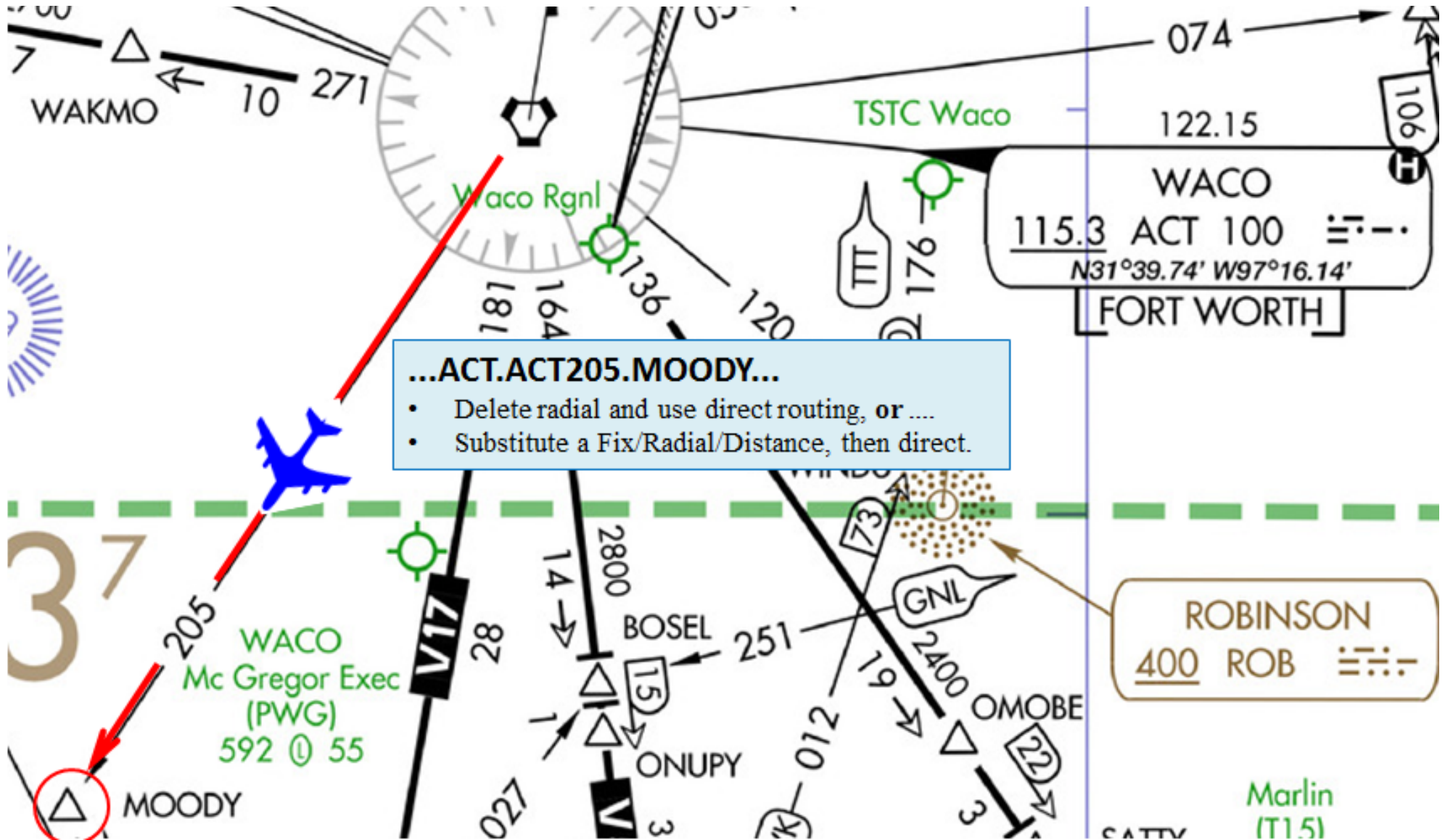
Implied Airway/Airway Junction

...ABQ.J13..J104...

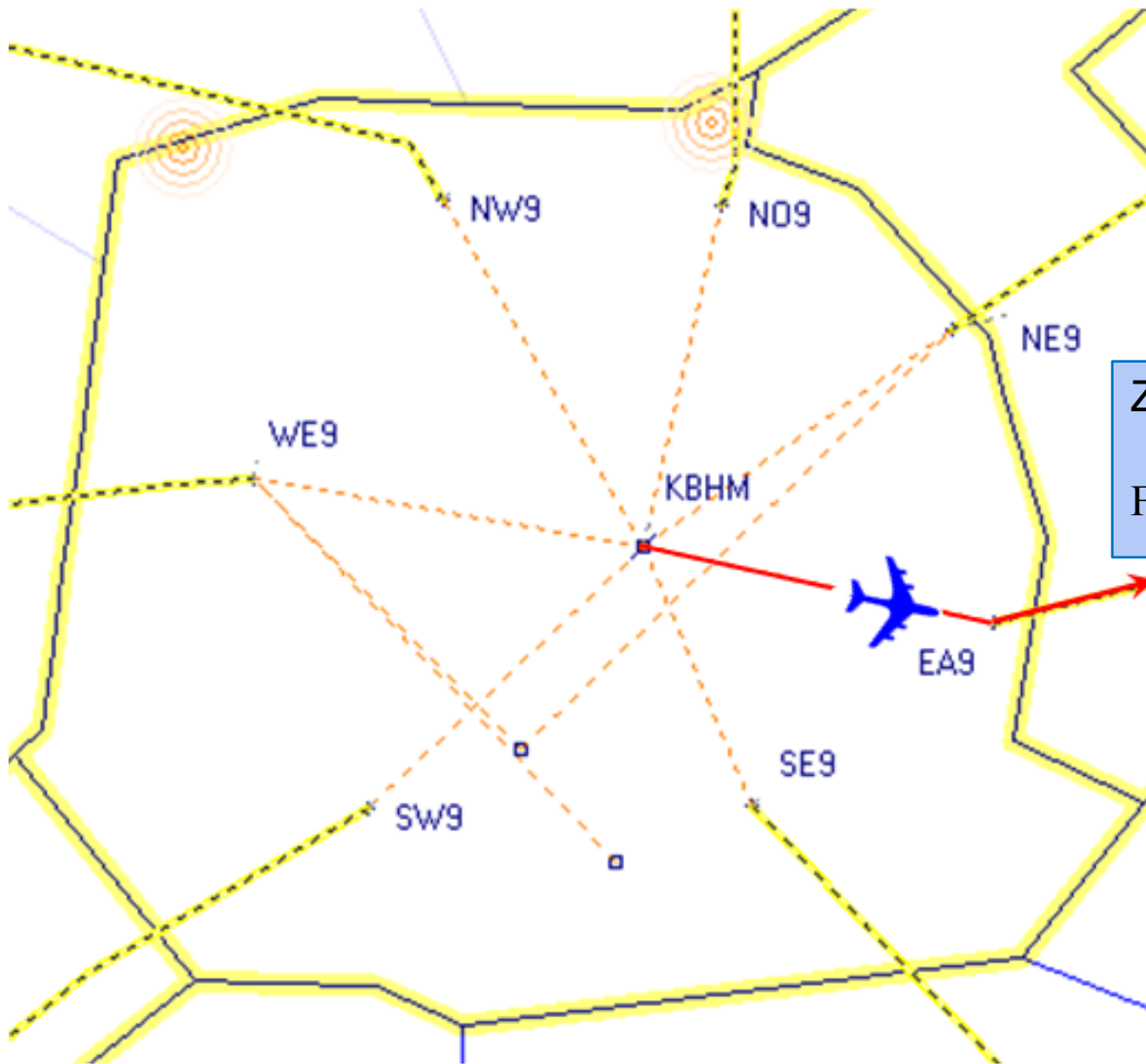
- No published fix, or
- A fix is published, but not used in the filed route.



Radial as a Route Element



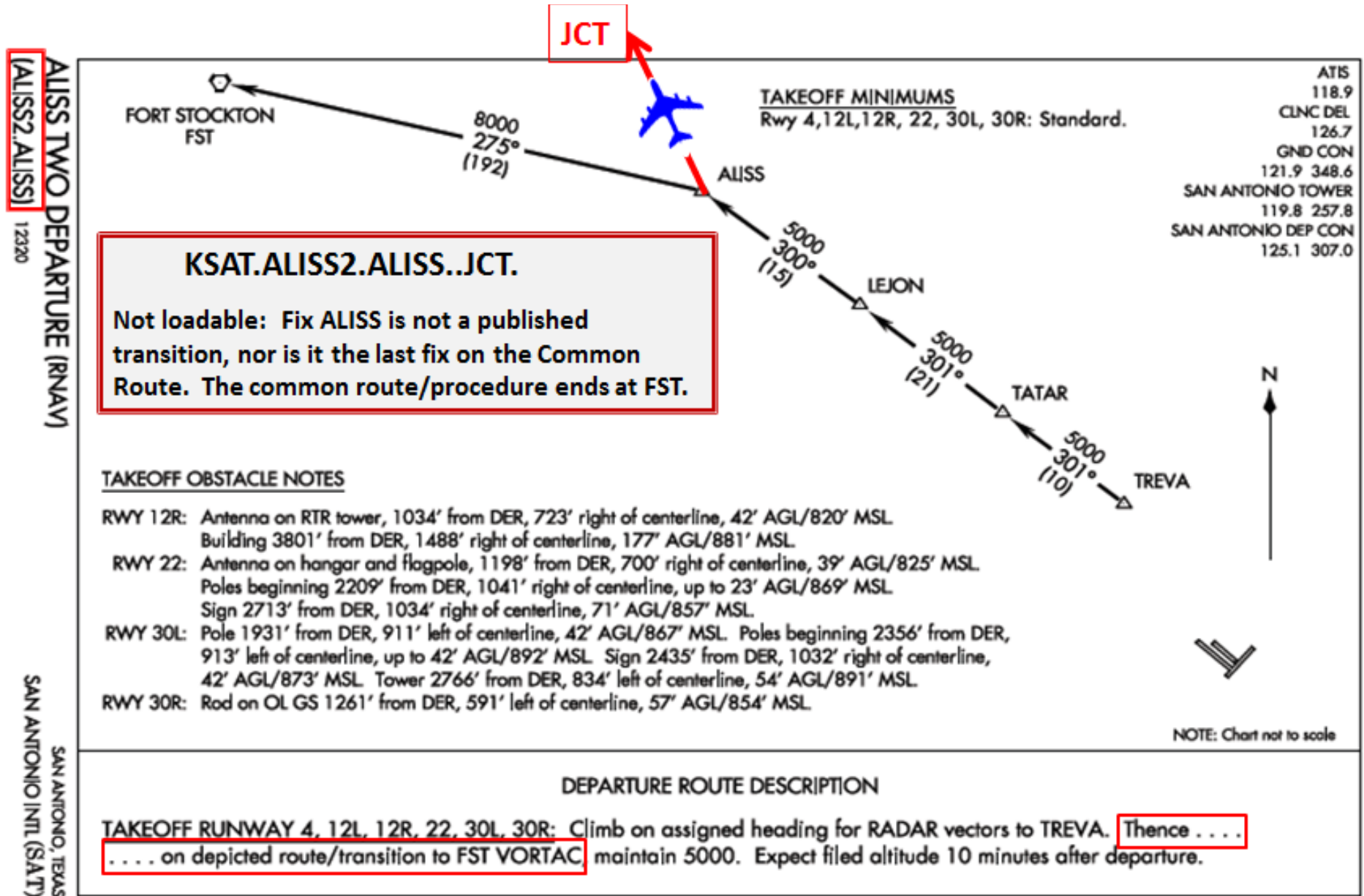
Local/Unpublished Fixes



Primarily a problem caused by
ERAM ADR/ADAR adaptation.

ZTL ADAR/ADR Routing-
KBHM..EA9..ATL.UNARM3.KATL
Fix EA9 is not known to aircraft systems.

Invalid SID Exit Fixes



ALISS TWO DEPARTURE (RNAV)
 (ALISS2.ALISS)
 12320
 SAN ANTONIO, TEXAS
 SAN ANTONIO INTL (SAT)



Invalid STAR Entry Fixes

