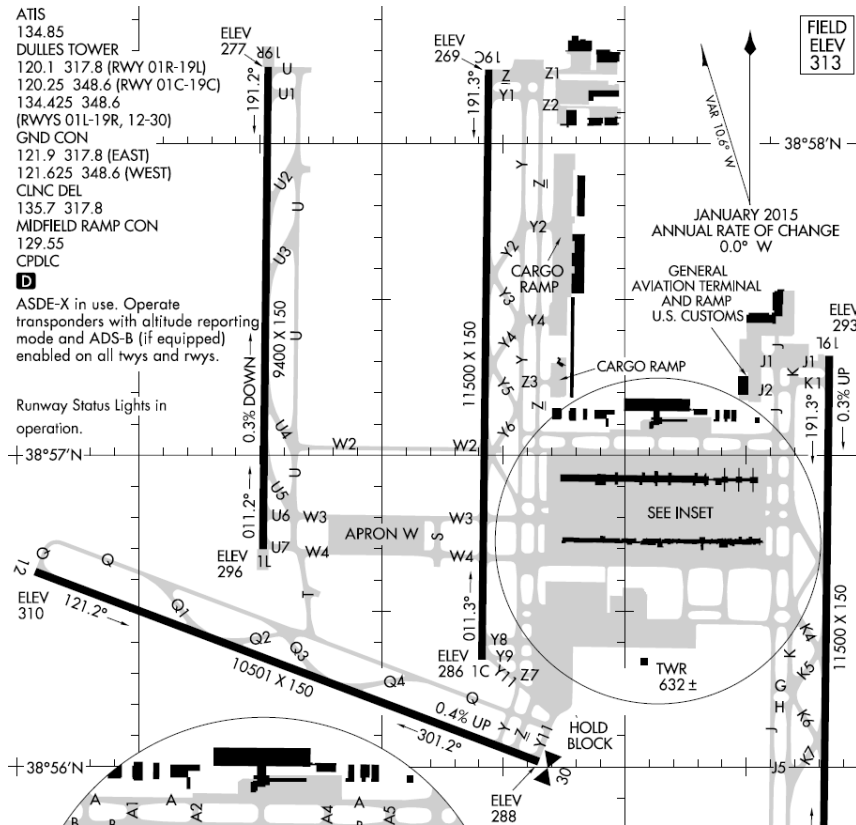


## DEPARTURE PROCEDURES

### IAD – Dulles International



**1/21-22** - Ground Control, All aircraft parked on RWY 1L/19R, and Apron W contact Ground Control on 123.775 for your exit taxiway when you are #1 holding short of U7 on U. As per the ATIS.

Atlantic Aviation	129.77
Signature Flight Support	131.87

**For informational planning purposes only. Refer to NOTAMs and a flight service facility for most recent information.**

*Due to the high number of itinerant departures, aircraft may be held on the ramp to facilitate sequencing, expedite departures and comply with traffic management restrictions.*



## IAD IFR/VFR DEPARTURE PROCEDURES

Refer to the NOTAMs for detailed information.

- CPDLC is available. Log-on K, I, A, D
- Monitor ATIS freq. 134.85, then contact Clearance Delivery on 135.7. Call No earlier than 30 minutes prior to proposed departure time and advise them of your location and current ATIS information.
- IFR aircraft departing IAD should expect to maintain an initial altitude of three thousand (3,000).
- Normal GA routes in effect. \*Note: **JCOBY SID IS PART 121 ONLY!**
- Flight Plans will drop out after 2 hours beyond proposed departure time. Pilots are responsible to refile / call clearance to amend time.
- **1/21-22** - RWY 1L/19R, TXWY W3, W4 (west of TWY S) and western portion of Apron W are non-movement areas. Pilots parked in these areas on departure, plan on taxiing via TWY W4 or TWY T depending on your first departure fix/SID. Contact Ground Control 123.775 as per the ATIS to receive your exit taxiway holding short of TWY U7 on TWY U.
- Do not call Ground Control until you are number 1.
- Message board placed at U7 with useful pilot information.
- Aircraft should be ready for departure upon reaching the runway.

*Note: Due to the high number of itinerant departures, aircraft may be held on the ramp to facilitate sequencing and comply with traffic management restrictions.*

In order to expedite departure from the Washington area during the Inauguration, **all aircraft should file via the preferred IFR routes in the AFD.**

