

# STS RSA IMPROVEMENTS TEMPORARY AIRFIELD CONFIGURATION PHASE 4

<b>LEGEND</b>	
ACTIVE	<span style="background-color: yellow; border: 1px solid black; display: inline-block; width: 20px; height: 10px;"></span>
CLOSED	<span style="background-color: red; border: 1px solid black; display: inline-block; width: 20px; height: 10px;"></span>
WORK AREA	<span style="background-color: blue; border: 1px solid black; display: inline-block; width: 20px; height: 10px;"></span>
LOW PROFILE BARRICADES	<span style="border-bottom: 1px dashed black; display: inline-block; width: 20px;"></span>

## TAC #4 - PHASE 4A

### OPERATIONAL RUNWAY

- RUNWAY 2-20 (4,831 FEET)

### CLOSED AIRFIELD PAVEMENTS

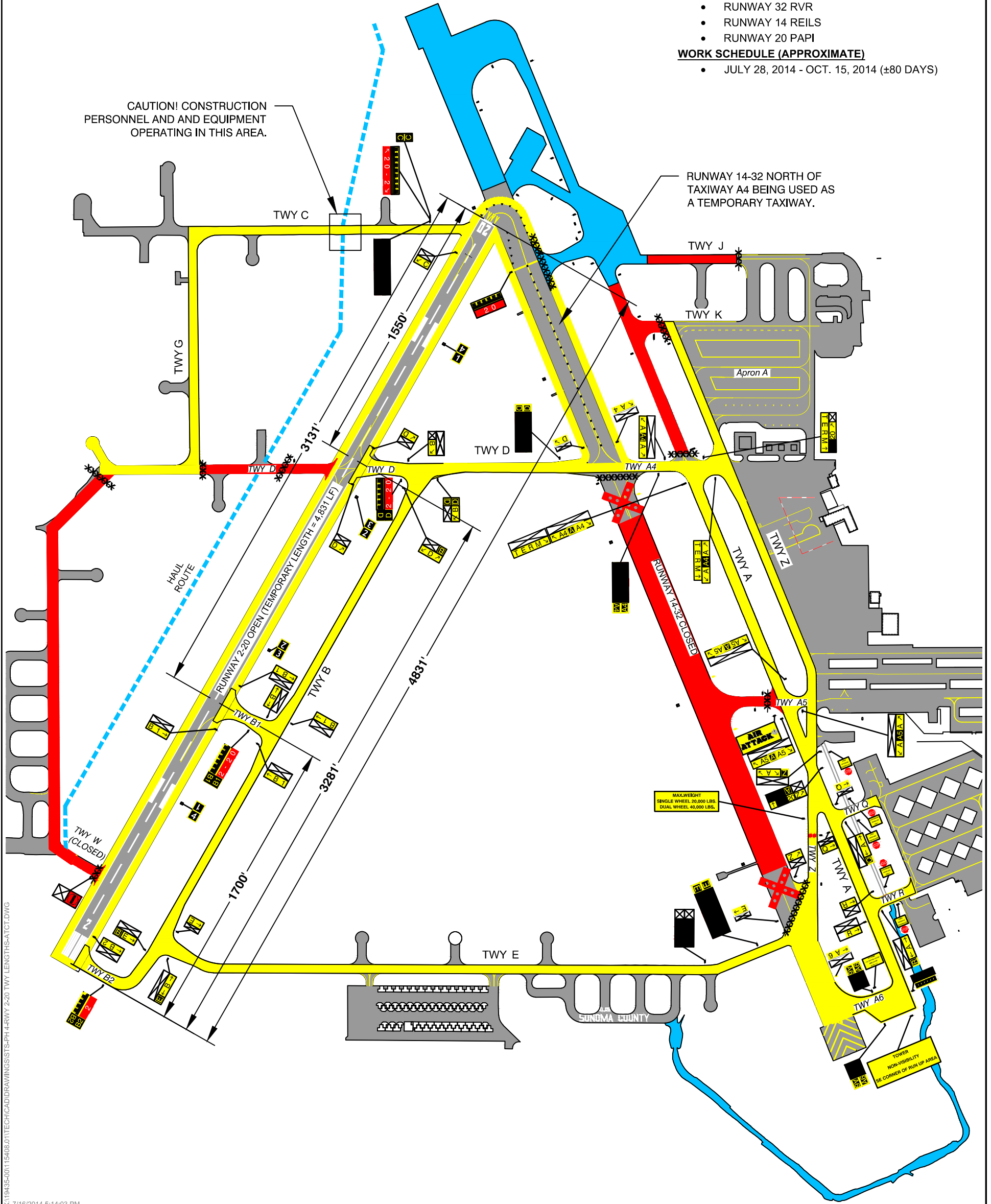
- RUNWAY 14-32
- TAXIWAY A NORTH OF TAXIWAY A4
- TAXIWAY A5 WEST OF TAXIWAY A
- TAXIWAY J
- TAXIWAY K WEST OF TAXIWAY Z
- TAXIWAY D WEST OF RUNWAY 2-20

### AFFECTED NAVIGATIONAL AIDS (OUT OF SERVICE)

- RUNWAY 14-32 LOCALIZER
- RUNWAY 14-32 GLIDE SLOPE
- RUNWAY 14-32 MALSR
- RUNWAY 14 VASI
- RUNWAY 32 RVR
- RUNWAY 14 REILS
- RUNWAY 20 PAPI

### WORK SCHEDULE (APPROXIMATE)

- JULY 28, 2014 - OCT. 15, 2014 (±80 DAYS)



CAUTION! CONSTRUCTION PERSONNEL AND AND EQUIPMENT OPERATING IN THIS AREA.

RUNWAY 14-32 NORTH OF TAXIWAY A4 BEING USED AS A TEMPORARY TAXIWAY.