

# Airport Teterboro

THE PORT AUTHORITY OF NY & NJ

## DALTON TWO DEPARTURE

NOT FOR NAVIGATION, CHECK LATEST JEPPESEN OR NOAA FACILITY DIRECTORY UNDER SPECIAL NOTICES FOR UP-TO-DATE INFORMATION.

KTEB/TEB  
TETERBORO

JEPPESEN  
1.MAR 13 (10-3)

TETERBORO, NJ  
VFR DEPARTURE

NEW YORK  
Departure (R)  
126.7  
119.2

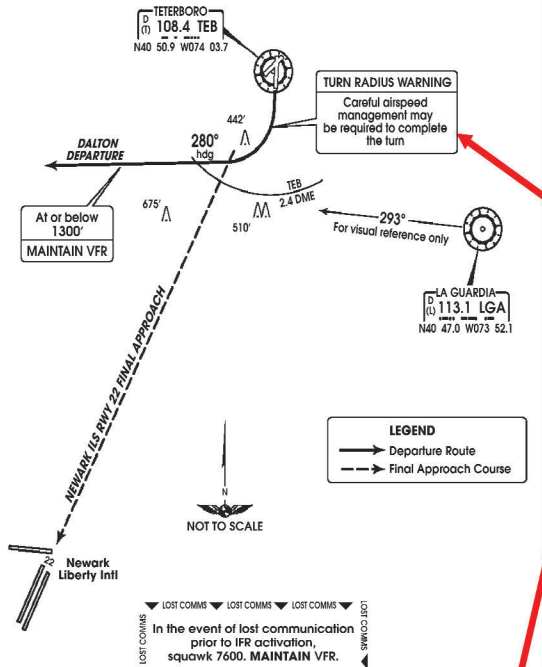
Apt Elev  
9'

- Trans level: FL180    Trans alt: 18000'
1. Teterboro Airport Rwy 19 VFR departure procedure with transition to an IFR clearance when Newark Liberty Intl is landing Rwy 22 and Teterboro is departing Rwy 19.
  2. WEATHER MINIMUMS: Ceiling 3000' and visibility 3 miles.
  3. Pilots should specifically request this procedure using the departure name.
  4. Aircraft unable to comply with the restrictions in this chart must advise lower prior to taxi and request the published SID.

### DALTON TWO DEPARTURE

(RWY 19)

**SPEED DO NOT EXCEED 180 KT**



PILOTS MUST REQUEST THE DALTON TWO FOR RUNWAY 19 FROM CLEARANCE DELIVERY

ATTENTION: TURN RADIUS WARNING AND INITIAL ALTITUDE RESTRICTIONS

MAINTAIN SAFETY, STRICT COMPLIANCE TO ALL PROCEDURES IS MANDATORY!

**INITIAL CLIMB**  
After departure, turn RIGHT heading 280°. MAINTAIN at or below 1300'. Complete the turn within TEB 2.4 DME, MAINTAIN VFR. If unable advise. Careful airspeed management may be required to complete the turn, depending on take-off weight and/or aircraft performance.

**ROUTING**  
Expect a climb clearance WEST of the KEWR ILS Rwy 22 final approach course. The climb clearance constitutes IFR activation and pilots are expected to resume normal airspeed. EXPECT control instruction to a departure fix as described in the published Teterboro standard Instrument departure (SID).