

# ***SWF Runway Rehabilitation***

Updated Operational Plan – June 2013

# *Agenda*

---

- Operational Plan
  - Stage 1A
  - Stage 1B
  - Stage 1C
  - Stage 1D
  - Stage 1E
  - Stage 2
  - Stage 3
  - Stage 4

# Existing Conditions

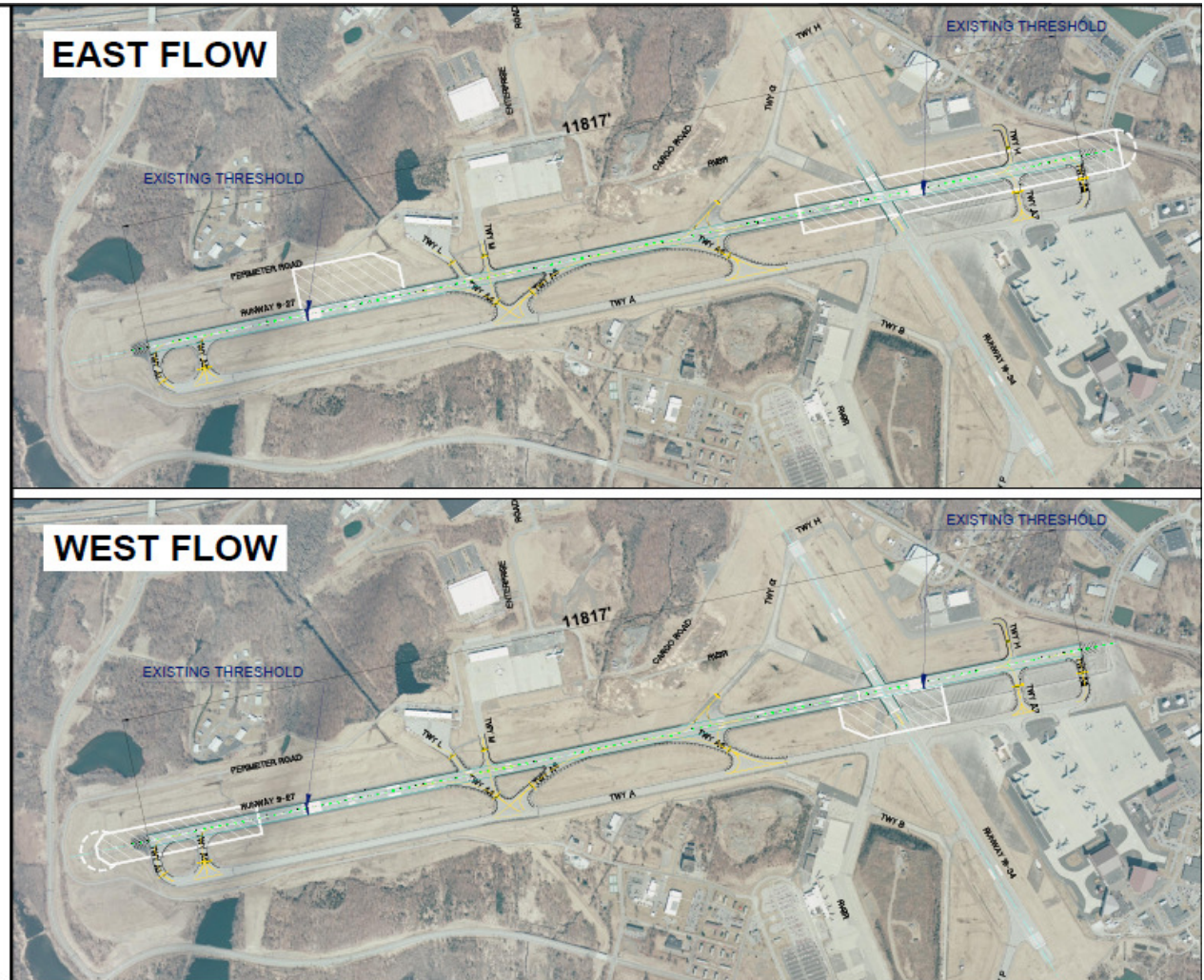
## EXISTING CONDITION

### RWY 9/27 DECLARED DISTANCE

	RWY 9	RWY 27
TORA	11817	11817
TODA	11817	11817
ASDA	10817	11817
LDA	8817	9817

### RWY 16/34 DECLARED DISTANCE

	RWY 16	RWY 34
TORA	6004	6004
TODA	6004	6004
ASDA	6004	6004
LDA	6004	6004



Stewart  
International Airport

RUNWAY REHABILITATION  
STAGING PLAN - Existing Condition

Aviation Department  
Master and Site Planning  
SWF-10053-1 Nov. 2012 LH/BJ

THE PORT AUTHORITY OF NY & NJ



# Stage 1A

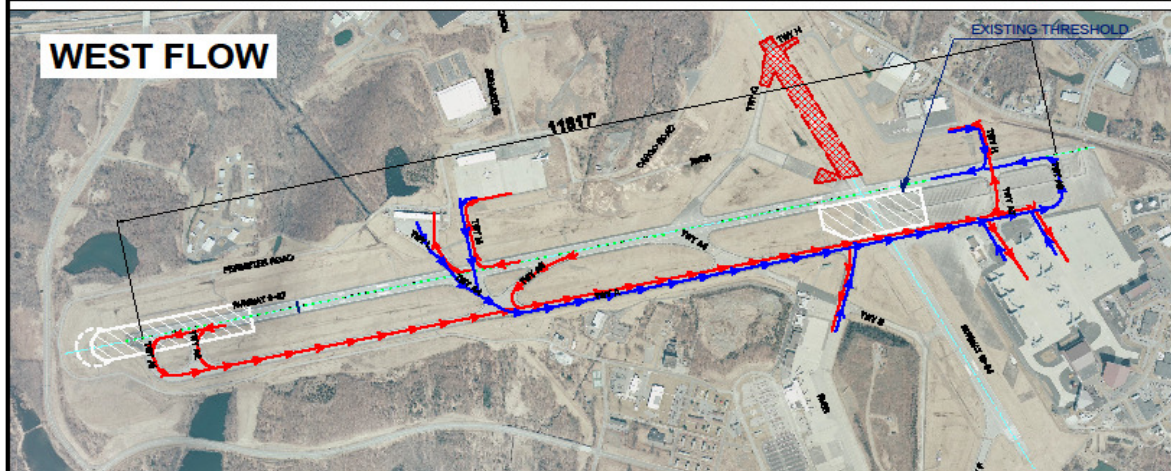
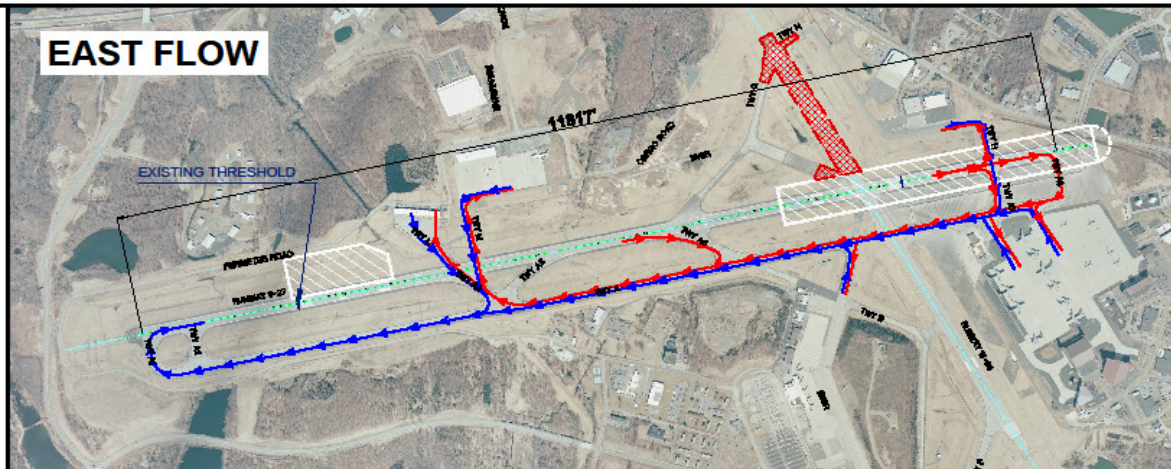
Stage Duration:  
From July 13, 2013 - November 5, 2013  
(4 MONTHS)

STAGE 1A:  
Close North Portion of RWY 16-34

DECLARED DISTANCE		
	RWY 9	RWY 27
TORA	11817	11817
TODA	11817	11817
ASDA	10817	11817
LDA	8817	9817

STAGE 1A is anticipated to be performed concurrently with work of Stage 1B.

-  Nightly Closure Only
-  Full Closure
-  Ground Flow - Arrival
-  Ground Flow - Departure



Stewart  
International Airport

**RUNWAY REHABILITATION  
STAGING PLAN - STAGE 1A**

Aviation Department  
Master and Site Planning  
STW-1000-1A June 2013 E2X




# Stage 1B

Stage Duration:  
From July 19, 2013 - December 3, 2013  
(5 MONTHS)


STAGE 1B:  
Close South Portion of RWY 16-34


Stage 1A and 1B may be worked on simultaneously.

DECLARED DISTANCE		
	RWY 9	RWY 27
TORA	11817	11817
TODA	11817	11817
ASDA	10817	11817
LDA	8817	9817

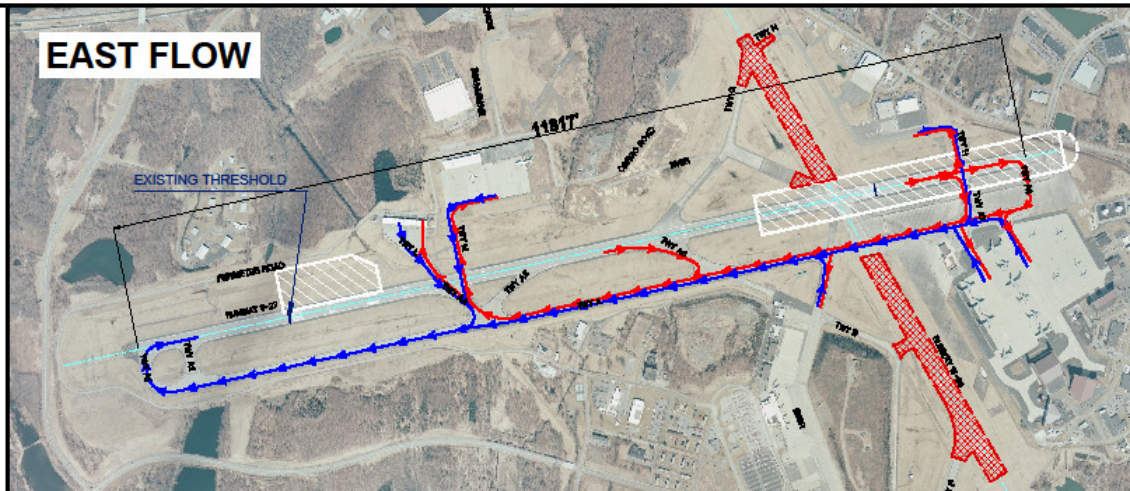
 Nightly Closure Only

 Full Closure

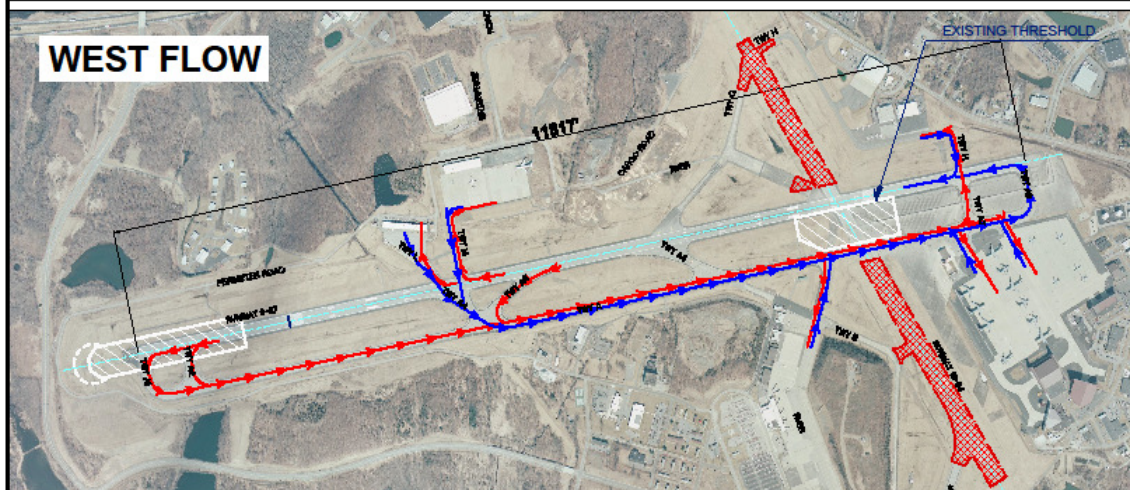
 Ground Flow - Arrival

 Ground Flow - Departure

## EAST FLOW



## WEST FLOW



Stewart  
International Airport

**RUNWAY REHABILITATION  
STAGING PLAN - STAGE 1B**

Airfield Department  
Master and Run Planning  
PWR-0605-13 June 2013 128



# Stage 1C

## Stage Duration:

From July 12, 2013 - October 3, 2013  
(3 MONTHS)

STAGE 1C: Nightly closure (11pm-5:30am)  
in addition to two weeks full closure between  
July 22, 2013 - August 6, 2013

- \* RWY 16-34 and TW "A" intersection
- \* RW 27 GS is out of service.

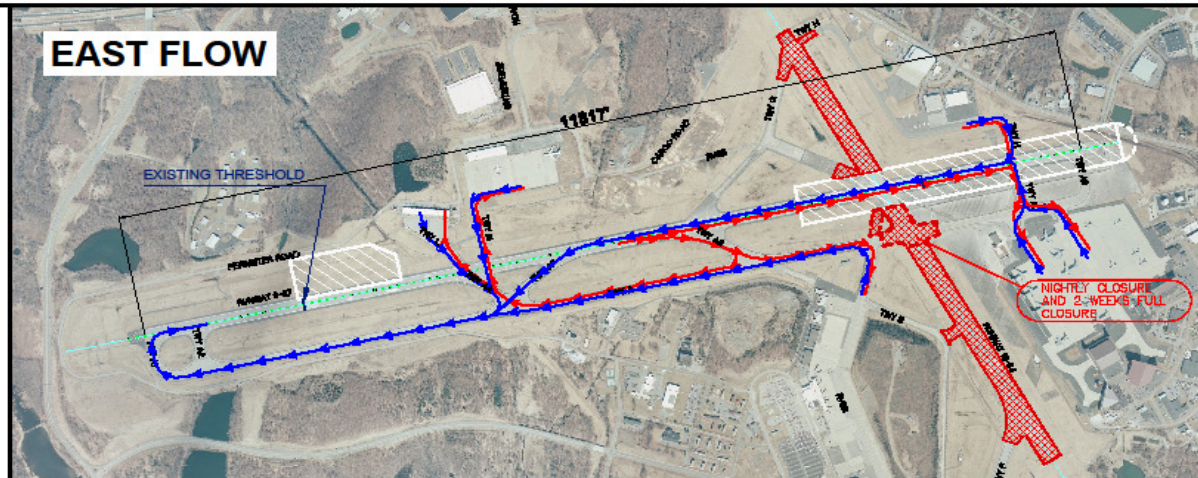
- \* Vehicular access for ARFF vehicles will be maintained at all times.
- \* RW 9-27 will be used for aircraft taxiing during the two weeks full closure.

### DECLARED DISTANCE

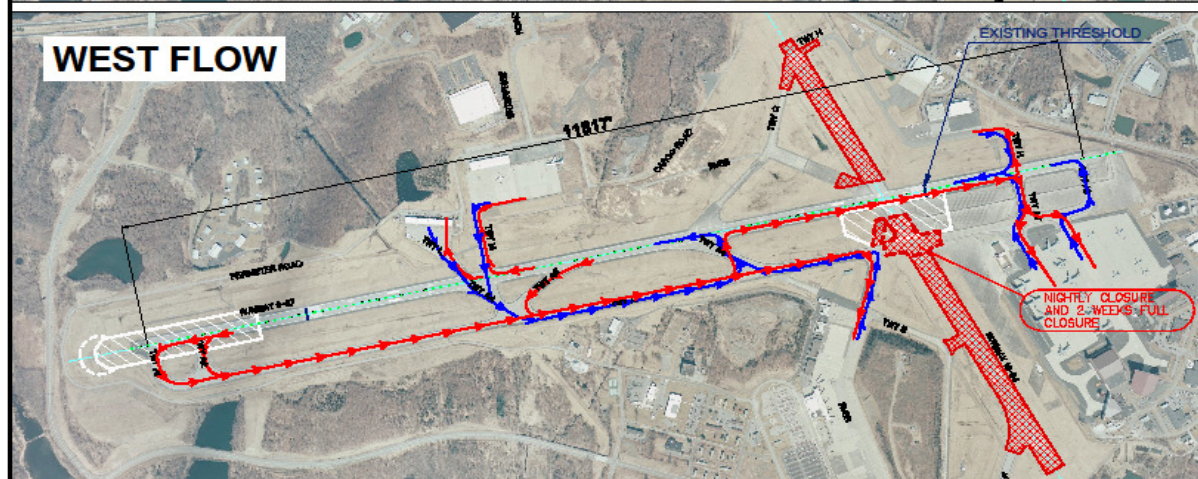
	RWY 9	RWY 27
TORA	11817	11817
TODA	11817	11817
ASDA	10817	11817
LDA	8817	9817

-  Nightly Closure Only
-  Full Closure
-  Ground Flow - Arrival
-  Ground Flow - Departure

## EAST FLOW



## WEST FLOW



Stewart  
International Airport

**RUNWAY REHABILITATION  
STAGING PLAN - STAGE 1C**

Avalonia Department  
Master and Site Planning  
RWY-16/34-1C June 2013 12E



# Stage 1D

## STAGE Duration:

From July 26, 2013 - October 19, 2013  
(3 MONTHS)

STAGE 1D: Runway Intersection Nightly closure (11pm-5:30am) in addition to two weeks full closure between 9/15/13 - 10/1/13

- \* RWY 27 GS and PAPI are out of service.
- \* RWY 9 LOC is out of service.
- \* Upon completion perform flight check.

### DECLARED DISTANCE with Back Taxiing

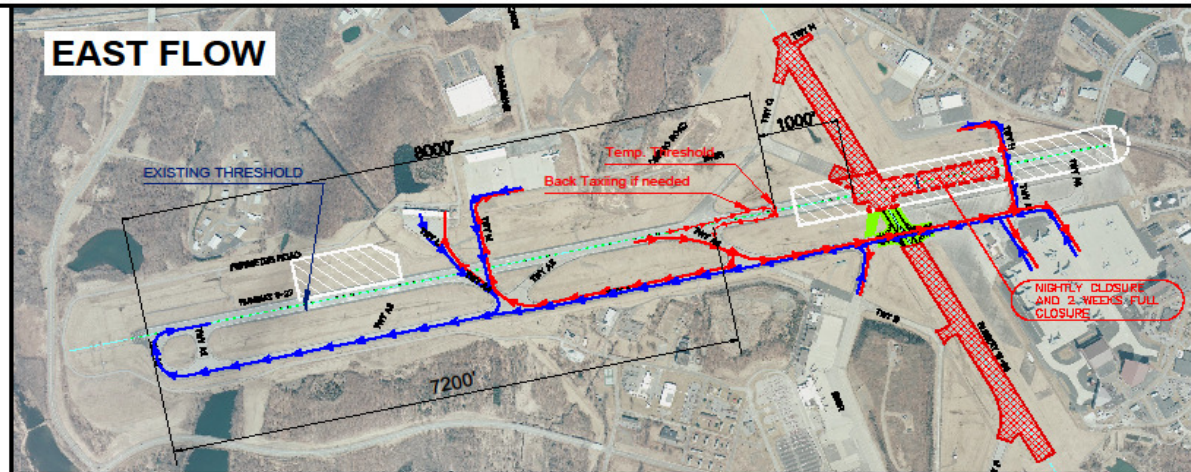
	RWY 9	RWY 27
TORA	8000	8000
TODA	8000	8000
ASDA	8000	8000
LDA	6000	8000

### DECLARED DISTANCE without Back Taxiing

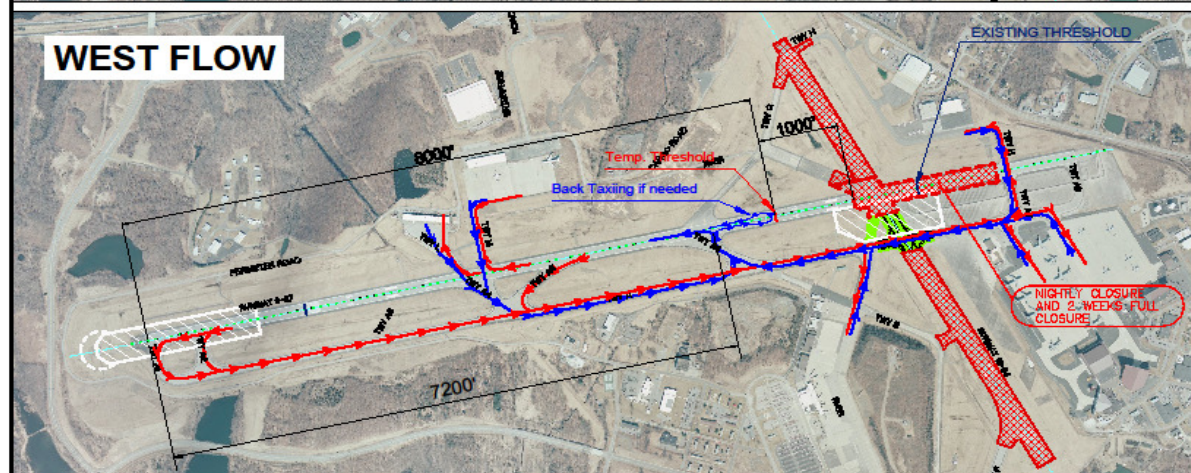
	RWY 9	RWY 27
TORA	8000	7200
TODA	8000	7200
ASDA	7200	7200
LDA	5200	8000

-  Nightly Closure Only
-  Full Closure
-  Ground Flow - Arrival
-  Ground Flow - Departure

## EAST FLOW



## WEST FLOW



Stewart  
International Airport

**RUNWAY REHABILITATION  
STAGING PLAN - STAGE 1D**

Aviation Department  
Master and Site Planning  
SPW-1000-113 June 2013 L21



# Stage 1E

**STAGE Duration:**  
From September 15, 2013 - October 24, 2013

**STAGE 1E:** East Portion of RW 9-27  
Nightly Closure (11pm-5:30am) in addition  
to two weeks full closure between 10/1/13 -  
10/13/13

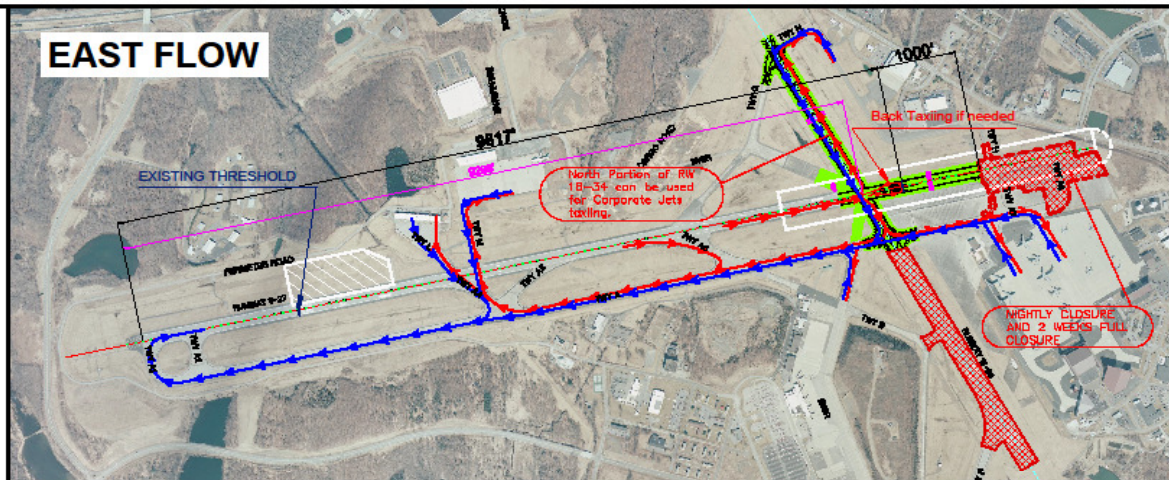
- \* RWY 9 LOC is out of service
- \* Upon completion perform flight check.

DECLARED DISTANCE with Back Taxiing		
	RWY 9	RWY 27
TORA	9817	9817
TODA	9817	9817
ASDA	9817	9817
LDA	7817	9817

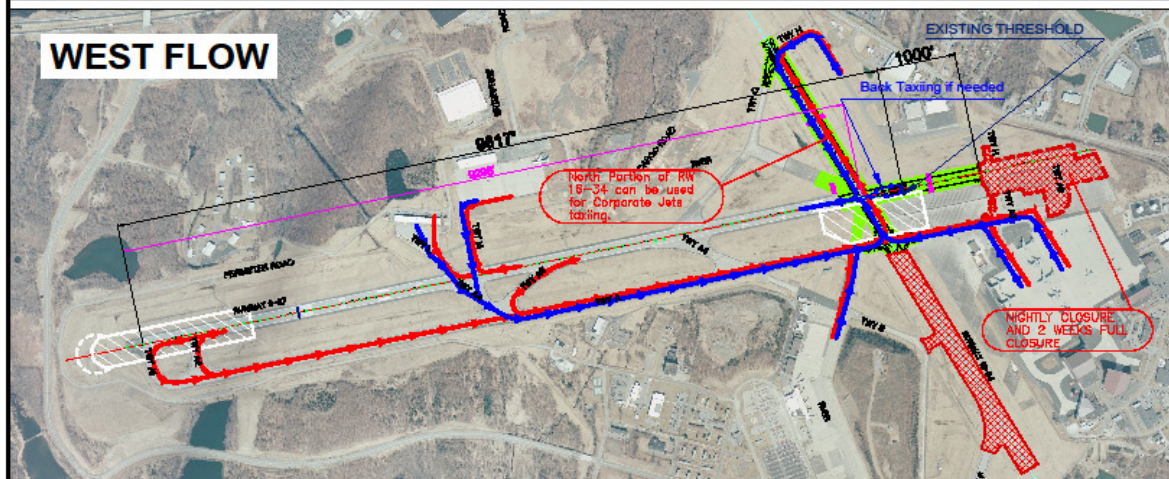
DECLARED DISTANCE without Back Taxiing		
	RWY 9	RWY 27
TORA	9817	9298
TODA	9817	9298
ASDA	9298	9298
LDA	7298	9817

-  Nightly Closure Only
-  Full Closure
-  Ground Flow - Arrival
-  Ground Flow - Departure

## EAST FLOW



## WEST FLOW



Stewart  
International Airport

**RUNWAY REHABILITATION  
STAGING PLAN - STAGE 1E**

Aviation Department  
Noise and Air Planning  
8W7-0000-1E 7/16/2013 LK



# Stage 2

## STAGE 2 Duration:

From March 31, 2014 - June 3, 2014  
Including Two 48-hour weekend closures  
(Friday 11pm - Sunday 11pm) of RWY 9-27 in  
addition to nightly closures (11pm-5:30am) to  
construct new TWY A3.

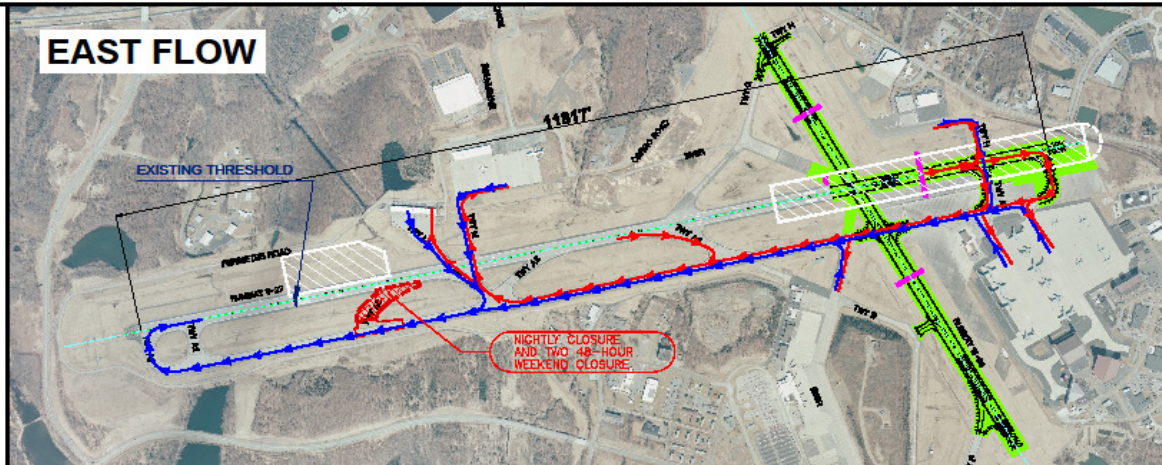
\* RWY 16-34 is back to service

DECLARED DISTANCE		
	RWY 9	RWY 27
TORA	11817	11817
TODA	11817	11817
ASDA	10817	11817
LDA	8817	9817

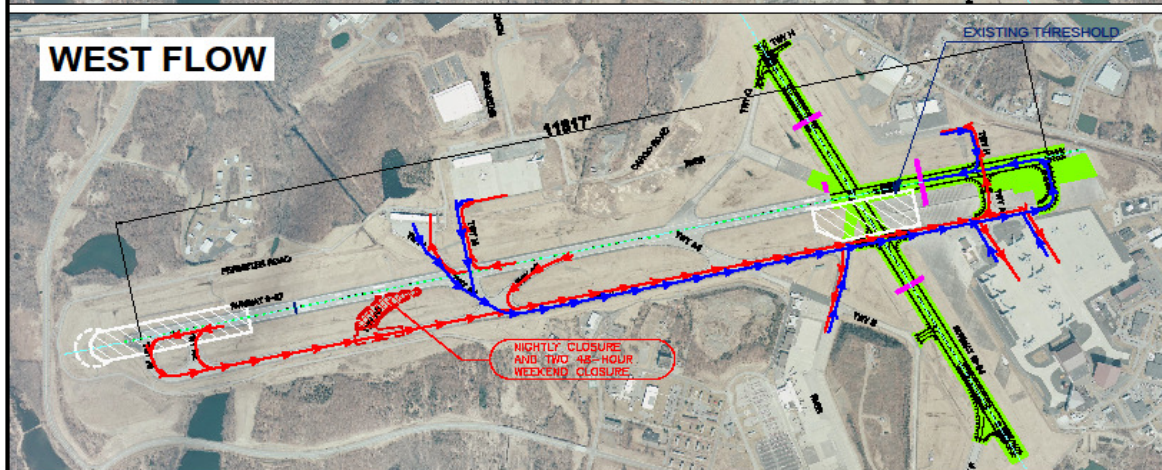
\* All Nav aids are available if flight check is  
passed at the completion of Stage 1E

-  Nightly Closure Only
-  Full Closure
-  Ground Flow - Arrival
-  Ground Flow - Departure

## EAST FLOW



## WEST FLOW



Stewart  
International Airport

**RUNWAY REHABILITATION  
STAGING PLAN - STAGE 2**

Airfield Department  
Master and Site Planning  
097-1001-0 Jan 2013 1/21



# Stage 3

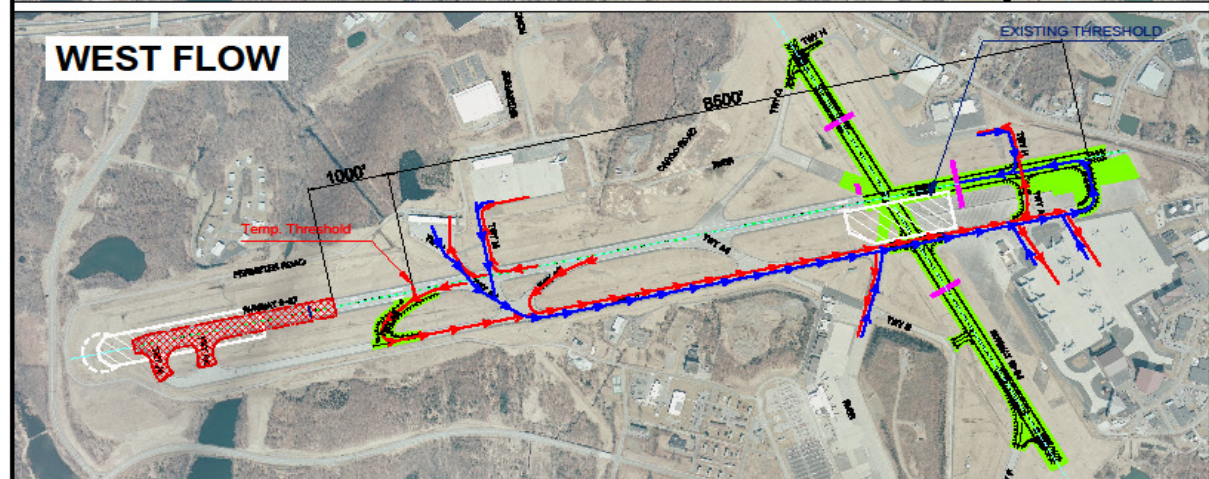
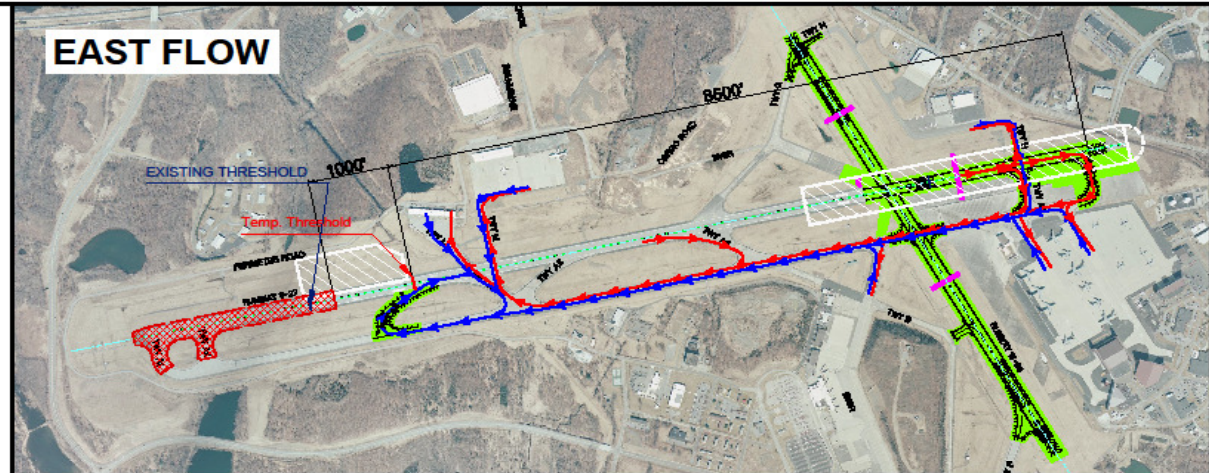
STAGE 3 Duration:  
From June 2014 - November 2014  
(6 MONTHS)

\* Full Closure of West Portion of RWY 9-27

DECLARED DISTANCE		
	RWY 9	RWY 27
TORA	8500	8500
TODA	8500	8500
ASDA	7500	8500
LDA	7500	6500

- \* RWY 27 LOC is out of service.
- \* RWY 9 GS is out of service due to displaced RWY 9 threshold.
- \* Upon Completion Perform Flight Check of RWY 27 LOC.

-  Full Closure
-  Ground Flow - Arrival
-  Ground Flow - Departure



Stewart  
International Airport

**RUNWAY REHABILITATION  
STAGING PLAN - STAGE 3**

Airports Department  
Master and EIR Planning  
PWT-10000-0 June 2013 1.25



# Stage 4

**STAGE 4 Duration:**  
From November 2014 - May 2015  
(6 MONTHS)

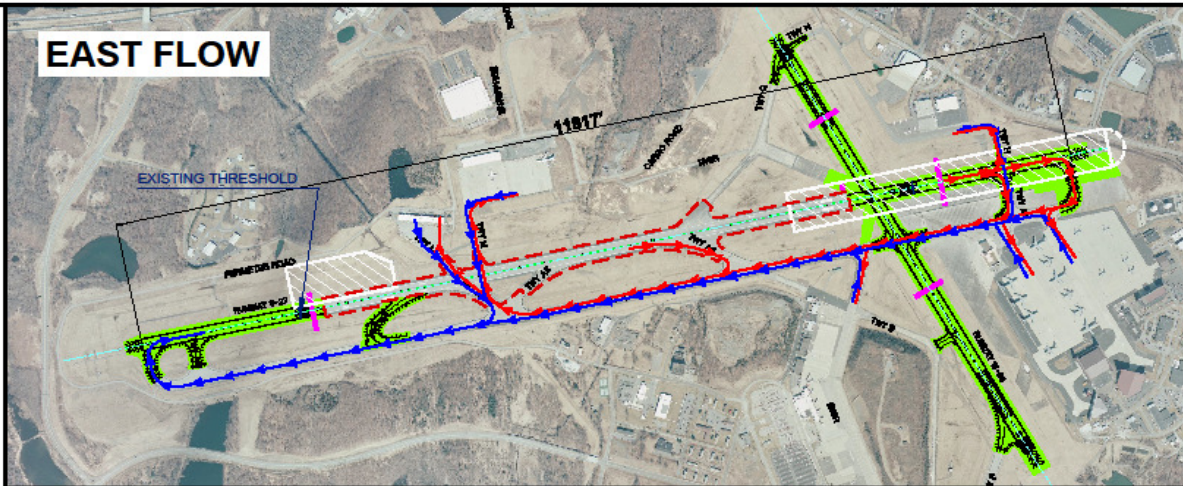
\* 6 months nightly closures (11pm-5:30am)  
in addition to 6 48-hour weekend closures  
(Friday 11pm-Sunday 11pm).

DECLARED DISTANCE		
	RWY 9	RWY 27
TORA	11817	11817
TODA	11817	11817
ASDA	10817	11817
LDA	8817	9817

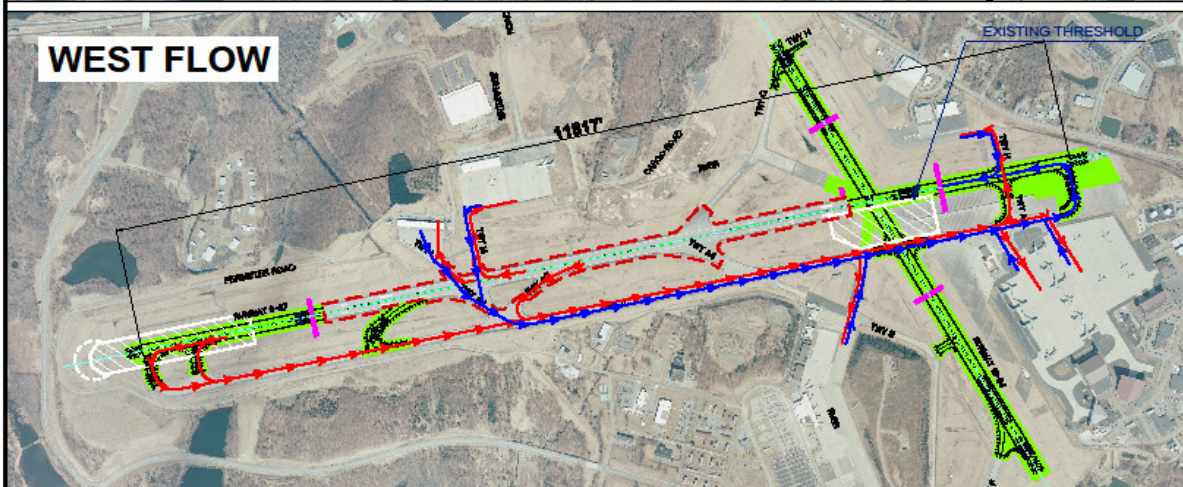
\* Both RWY 9 and 27 GS might be out of service because of the work zone in Glide Slope Critical Area.  
\* Upon Completion Perform Flight Check of RWY 9 GS.

-  Nightly Closure
-  Ground Flow - Arrival
-  Ground Flow - Departure

## EAST FLOW



## WEST FLOW



Stewart  
International Airport

**RUNWAY REHABILITATION  
STAGING PLAN - STAGE 4**

Aviation Department  
Master and Site Planning  
pwr-2008-1 Rev 2015 12