



# Super Bowl 2025 ATC PLAYBOOK



## New Orleans, Louisiana



### TABLE OF CONTENTS

Pre-flight Planning .....	2
Arrival Procedures .....	4
Departure Procedures .....	4
QR Code for Departure Routes .....	7
MSY Airport Diagram and Hot Spots .....	8
NEW Airport Diagram and Hot Spots .....	9
Frequencies / Phone Numbers .....	10

### BACKGROUND

**Super Bowl LIX** is the upcoming American football championship game of the National Football League (NFL) for the 2024 season. The game is scheduled to be played on February 9, 2025, at Caesar's Superdome in New Orleans, Louisiana. It will be the eighth Super Bowl played in the Superdome, and the 11th in the city of New Orleans. The most recent occurrence was Super Bowl XLVII in 2013, which was held in the same venue (then called the Mercedes-Benz Superdome).

This document does not supersede restrictions contained in other FDC NOTAMs.

# Pre-Flight Planning

Your careful reading and adherence to the procedures in this document are essential to maintaining the safety record of this event. Flight planning should include thorough familiarity with Notice procedures, as well as knowledge of primary and alternate airports. Keep a copy of this document available for in-flight reference.

## MSY and NEW Flight Planning

- Upon arrival at MSY or NEW, check with your FBO about outbound routing. Preferred routes will be used to facilitate flow in and out of multiple local area airports. Routing can be accessed by scanning the QR code on page 7 of this document.
- Fuel and ground transportation will be provided at the parking locations. **Based on the significant volume of aircraft expected during the event, ground movement will be restricted to facilitate a safe and efficient airport environment. Runway crossings for passenger pickup/drop-off (north side to south side and vice versa), miscommunicated parking assignments, etc., will not be authorized.**

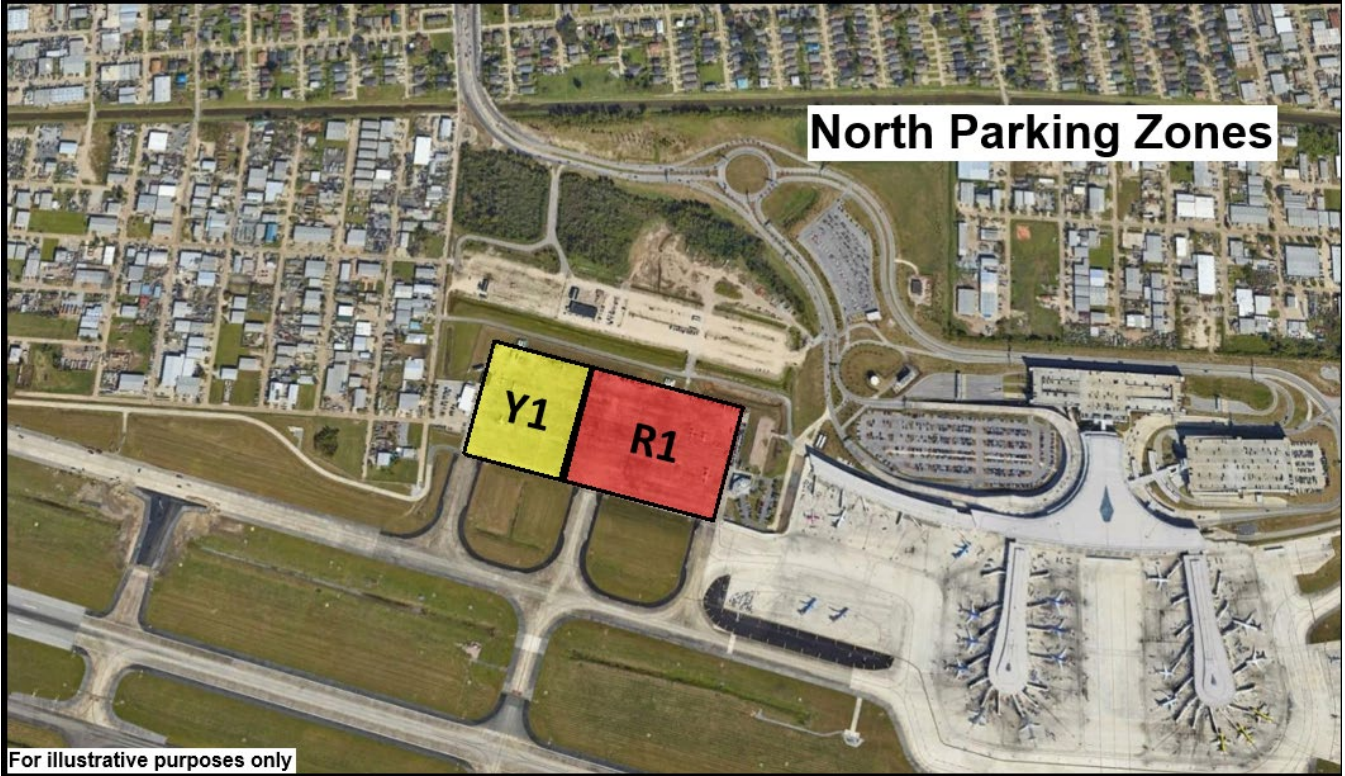
- **International arrivals, file your APIS once you have secured your arrival reservation from the FBO and contact CPB telephonically at 504-670-2270.**

## MSY Aircraft Parking

- Assigned aircraft parking areas at MSY are on the north and south sides of the airport. The areas are identified by color and numbered zones based on the fixed-based operator (FBO) the reservation is made through (for example, "Yellow 1" for Signature Aviation parking on the north side of the airport). Diagrams of the assigned areas are contained below.
- FBO color assignments are as follows:  
Signature Aviation MSY (North Parking) - **Yellow**  
NetJets pickup/drop-off area (Y2 thru Y6) - **Yellow**  
Atlantic Aviation MSY - **Red**
- Your parking information is essential for both your arrival and eventual departure from MSY. **Include assigned parking zone in the remarks section of both your inbound and outbound flight plans.** Be sure to identify both the color and number assigned to your zone (for example, "Parking Red 4").

## MSY Parking Diagrams





# Arrival Procedures

## MSY and NEW Arrivals

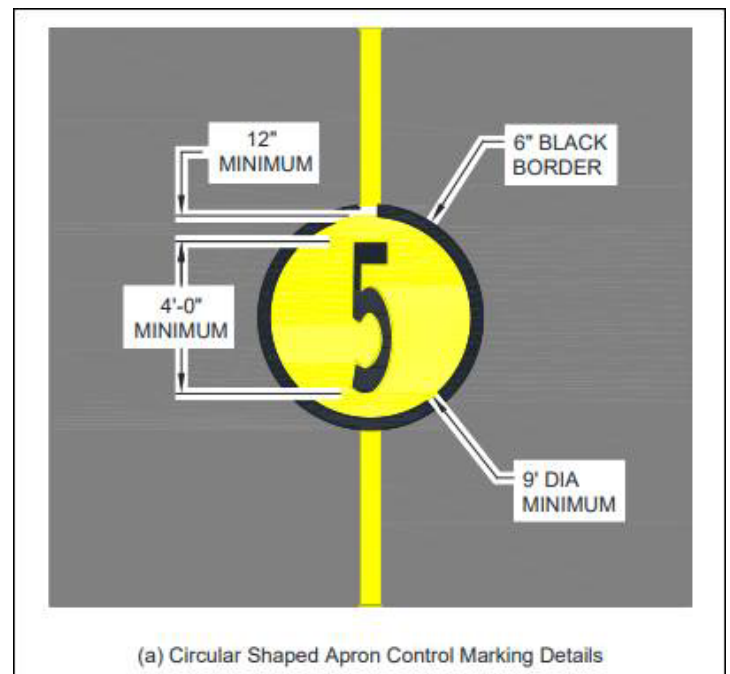
- Be familiar with any TFRs or other restrictions contained in FDC NOTAMs which may be active at the expected time of your arrival.
- Expect, Plan, and Prepare landing for any available runway. Runway assignment may be determined, or changed, with short notice. Factors include, but are not limited to weather, traffic volume, traffic flow in the air / on the ground, wind direction / speed, assigned parking, and instrument approach availability.
- If you are landing MSY, advise MSY Tower on initial contact which parking zone from the previous section you have been assigned. **Be sure to identify both the color and number assigned to your zone (for example, "Parking Red 4").**

# Departure Procedures

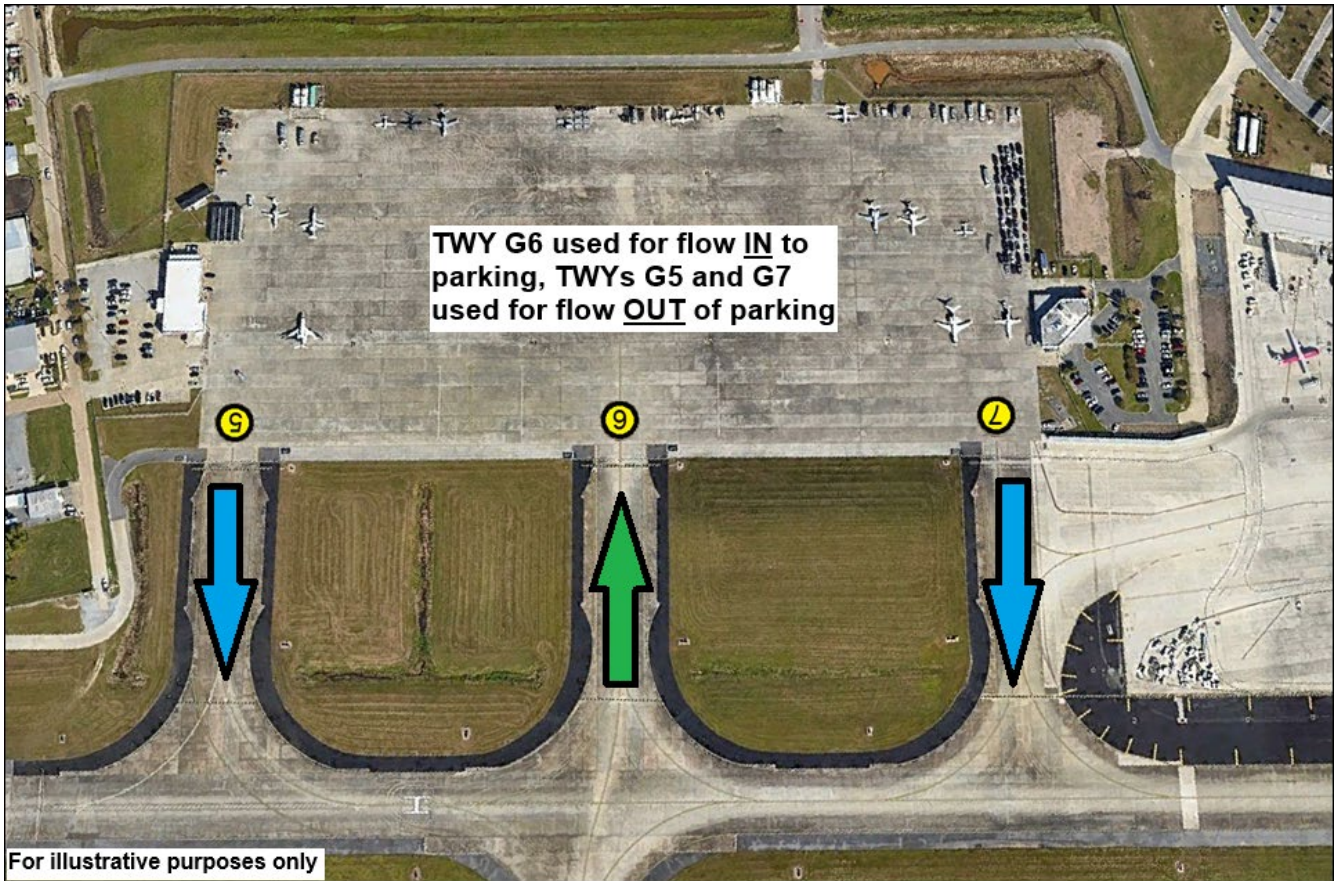
## MSY Departures

- MSY will initiate **Gate Hold** procedures during peak traffic times. There will be a message on the MSY ATIS when these procedures are active. Outside of these times, normal departure procedures will be used.
- Gate Hold procedures are as follows:
  1. Obtain departure clearance from Clearance Delivery via voice (120.925) or via automated means.
  2. After receiving departure clearance, you will be instructed to contact Gate Hold (124.45).
  3. Gate Hold will then approve engine start, or if delays are expected, issue an expected engine start time.
  4. Advise Gate Hold when ready for taxi. At this time, you will be instructed to reposition to one of the holding spots identified in the diagrams below and **monitor** Ground (121.9). In order to minimize frequency congestion, do not contact Ground. Ground will initiate contact.
  5. Ground will then issue taxi instructions and sequence to your departure runway.
- Gate Hold reposition spots are located near assigned parking areas, and just prior to entering movement areas. They are identified by a large yellow circle with black numbering and border. Spots 1-4 are located near south side parking. Spots 5-7 are located on the north side of the airport.

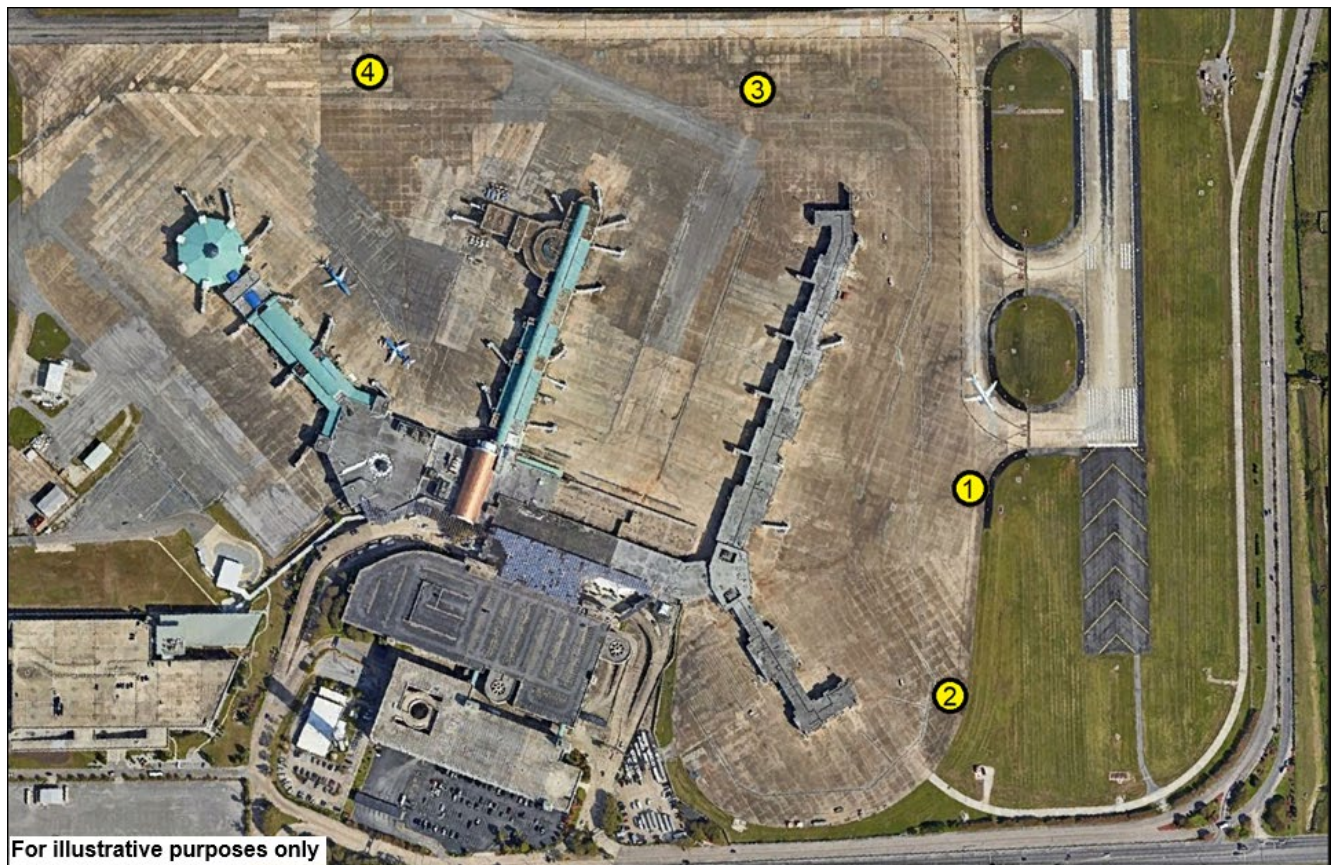
Example Reposition Spot Marking



### North Parking Reposition Spots



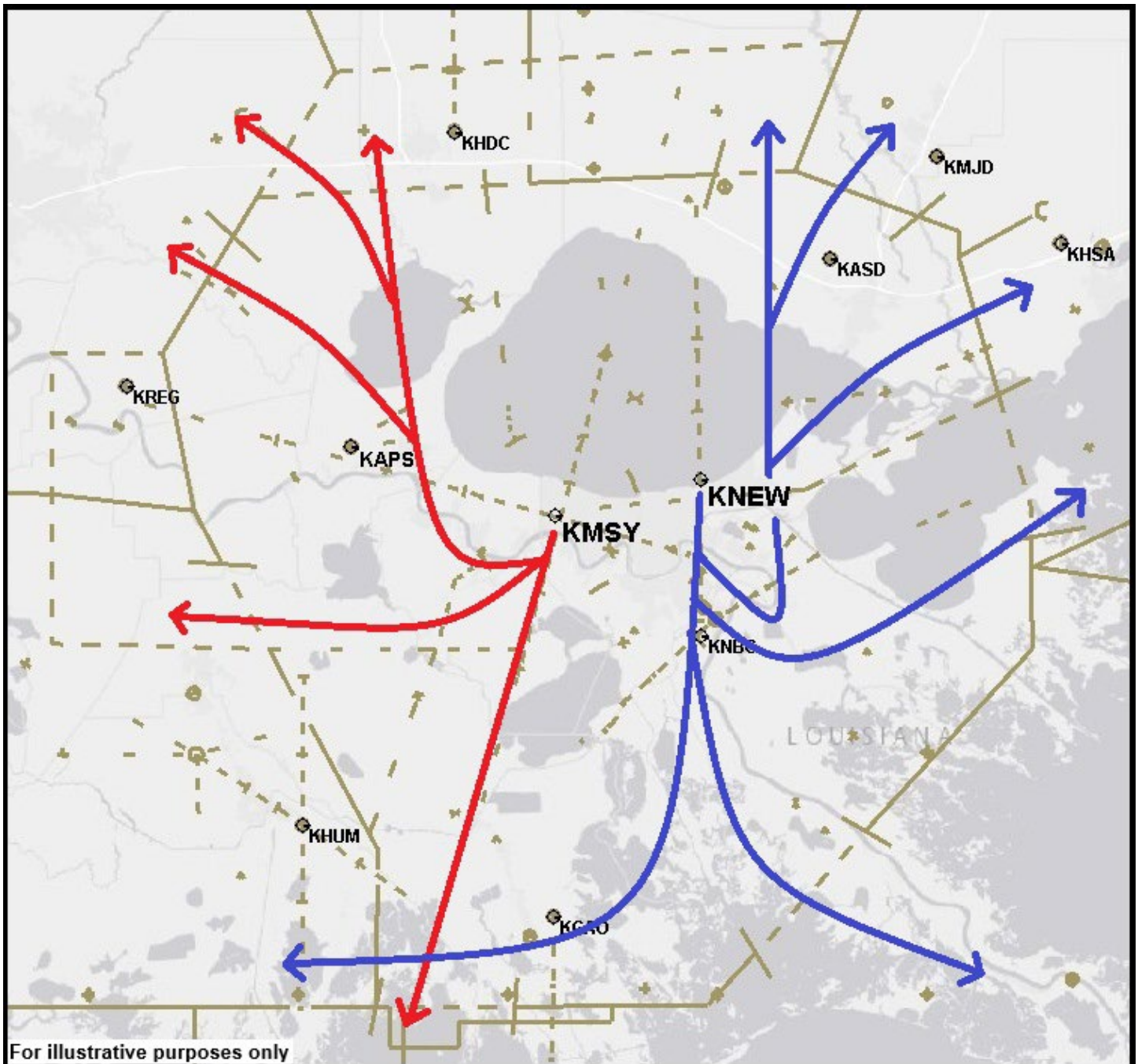
### South Parking Reposition Spots



## Departure Routing

- Obtain departure route information from the FBO that your reservation was made through. Routing can be accessed by scanning the QR code on page 7 of this document.
- MSY departures with destinations northeast to southeast can expect to travel north or south until clear of congestion prior to turning towards destination.
- NEW departures with destinations northwest to southwest can expect to travel north or south until clear of congestion prior to turning towards destination.
- The above departure flow expectations apply to all runway configurations at MSY and NEW. A diagram of expected departure flows is contained below.

Example Departure Flow

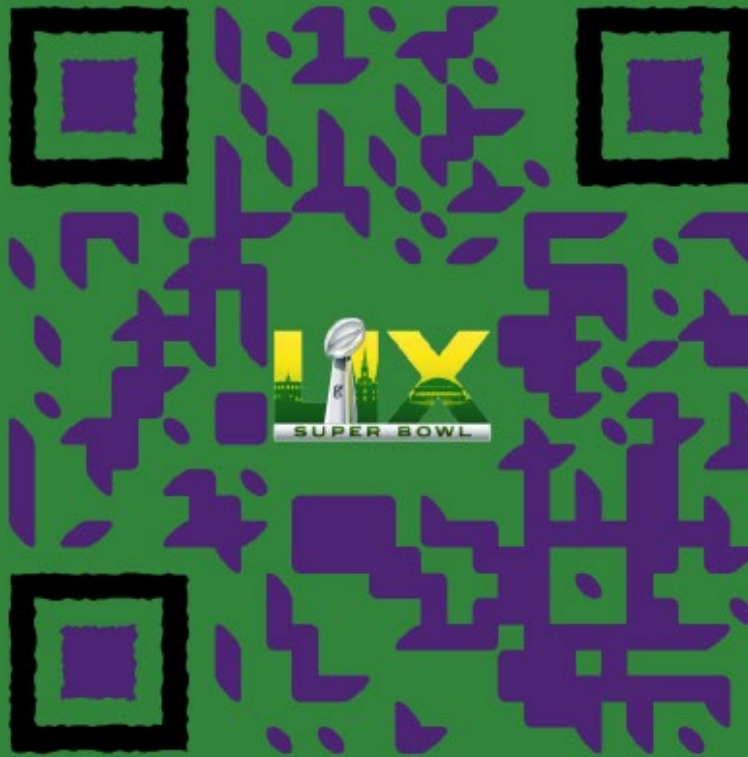


# 2025 SUPER BOWL LIX

NEW ORLEANS, LOUISIANA

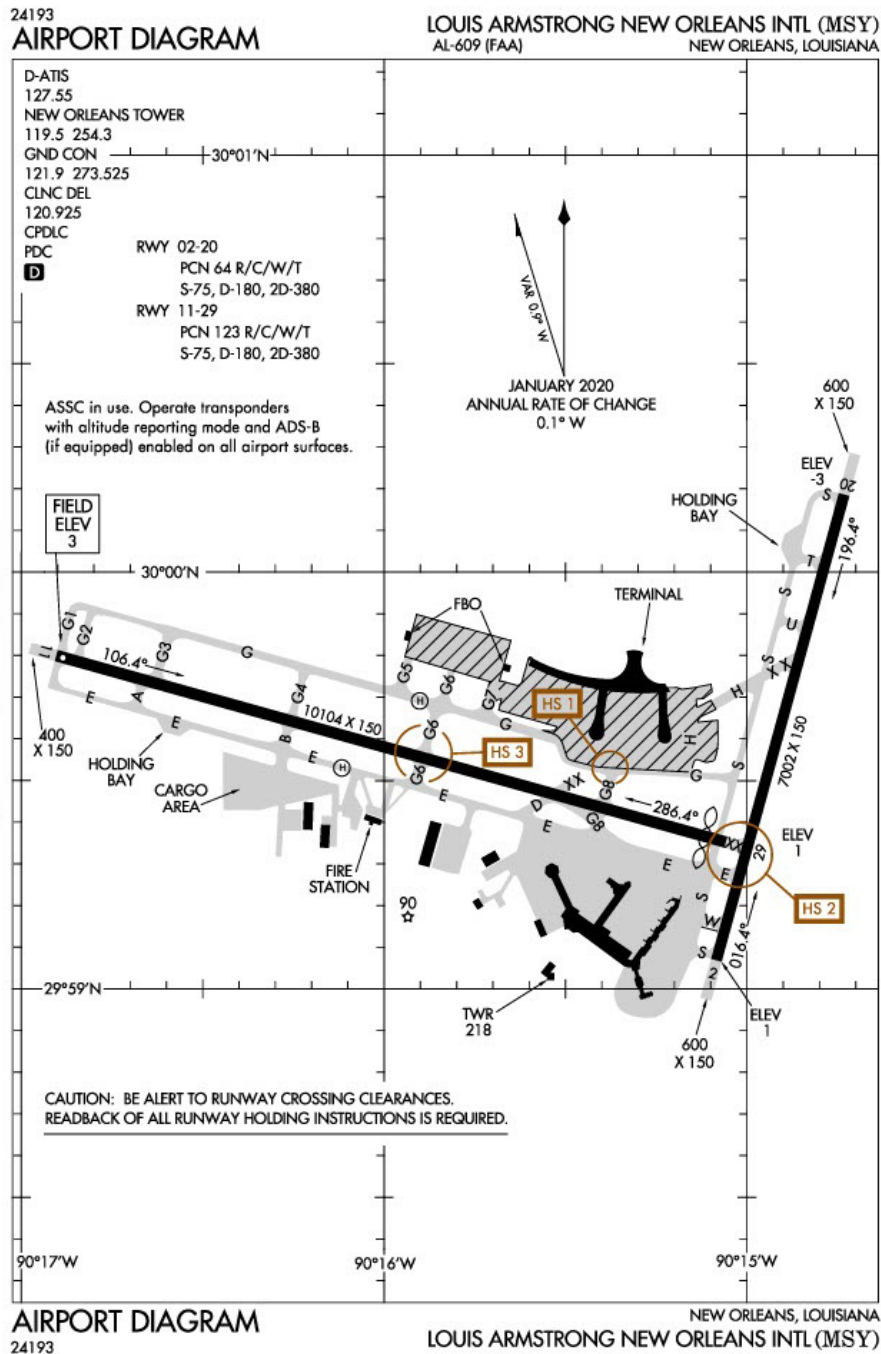
FEBRUARY 6-11, 2025

DEPARTURE ROUTES



SCAN ME & VIEW PDF

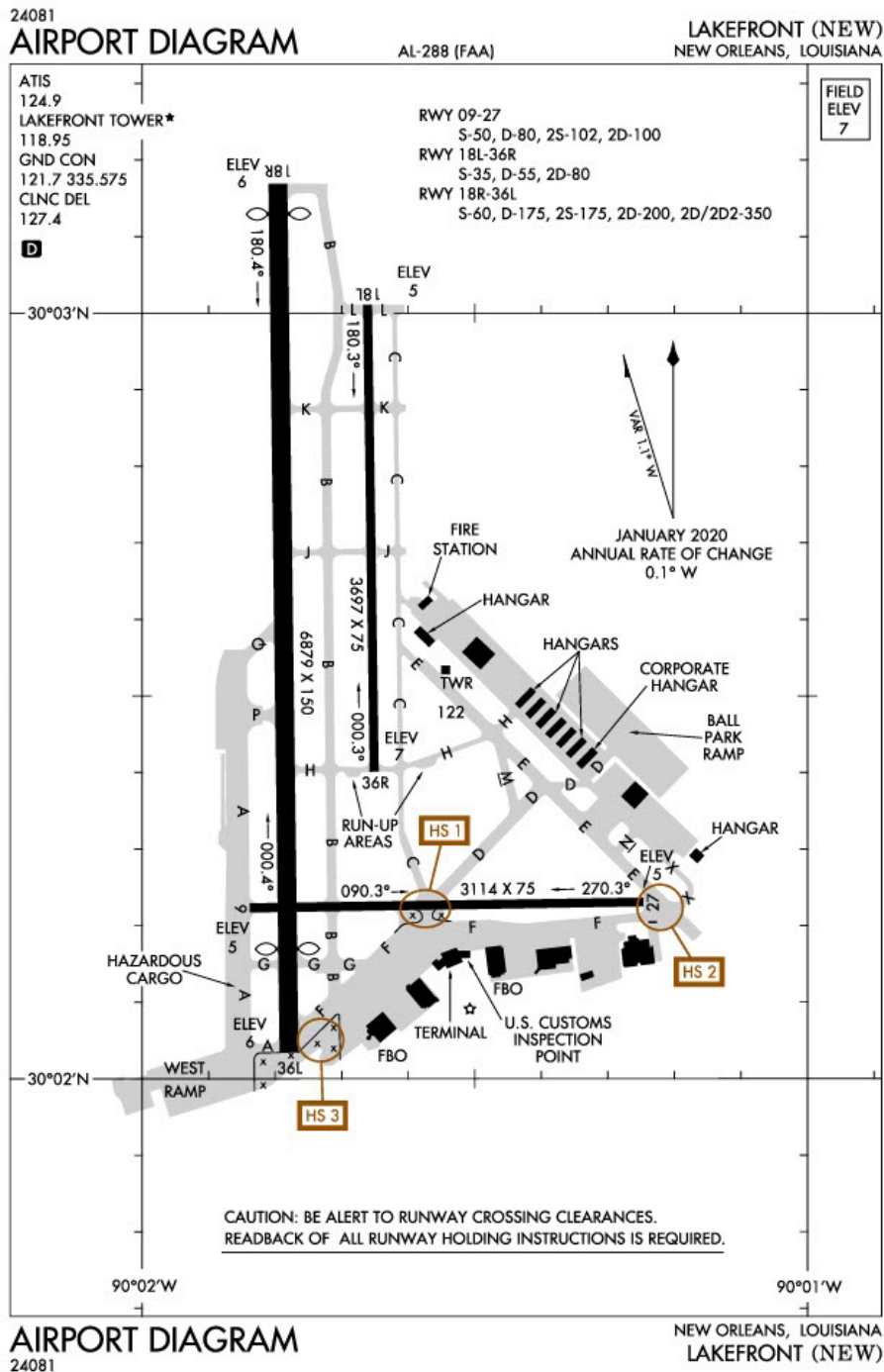
# MSY Airport Diagram and Hot Spots



## Hot Spots

- HS1 Limited wingtip clearance on Twy G near Concourse Bravo due to acft pushbacks. Maint vigilance exiting Rwy 11/29 on Twy G and when taxiing on Twy G. High Traffic area.
- HS2 Rwy 11 green painted overrun mistake for Twy E.
- HS3 Rwy 11-29 and Twy G6.

# NEW Airport Diagram and Hot Spots



## Hot Spots

- HS 1 Twy F south of Rwy 09-27.
- HS 2 Twy F at Apch end Rwy 27.
- HS 3 Twy B at Rwy 36L.

# Frequencies / Phone Numbers

<u>KMSY ATC Frequencies</u>			
Tower	<b>119.5</b> / 254.3	Approach North	<b>133.15</b> / 290.3
Ground	<b>121.9</b> / 273.525	Approach South	<b>123.85</b> / 256.9
Clearance Delivery	<b>120.925</b>	Approach West	<b>125.5</b> / 350.35
Gate Hold	<b>124.45</b>	Approach Houma	<b>118.9</b>
ATIS / D-ATIS	<b>127.55</b>	MSY Radar Final	<b>120.1</b>
		NEW Radar Final	<b>118.1</b>

<u>KMSY ATC Phone Numbers</u>			
ATC Admin	<b>504-471-4300</b>	Radar Clearance Delivery	<b>504-471-4350</b>

<u>KNEW ATC Frequencies and Phone Numbers</u>			
Tower	<b>119.5</b> / 254.3	Ramp Boss	<b>128.775</b>
Ground	<b>121.7</b> / 335.575	ATIS	<b>124.9</b>
Clearance Delivery	<b>127.4</b>	ATC Admin	<b>504-240-7100</b>

<u>Local Area Tower / CTAF Frequencies</u>			
KASD CTAF / Unicom	<b>122.8</b>	KHSA Tower / CTAF	<b>127.15</b>
KAPS CTAF / Unicom	<b>122.7</b>	KHUM Tower / CTAF	<b>120.925</b>
KGAO CTAF / Unicom	<b>123.0</b>	KMJD CTAF / Unicom	<b>122.8</b>
KHDC Tower / CTAF	<b>120.575</b>	KREG CTAF / Unicom	<b>123.0</b>

<u>FBO Phone Numbers</u>			
Signature Aviation MSY	<b>504-468-7722</b>	Atlantic Aviation MSY	<b>504-466-1700</b>
Signature Aviation NEW	<b>504-241-2800</b>		

Additional information can be found by visiting [www.faa.gov/superbowl](http://www.faa.gov/superbowl)